



transmisyon zincir katalođu

M E K A N İ K Z İ N C İ R



Z İ R V E D E K İ K A L İ T E
WIPPERMANN

İÇİNDEKİLER

KULLANIM SAHALARI:

Sanayide, ziraatte, otomotiv ve motosikletlerde, plastik, tekstil, kağıt, ambalaj, baskı, demir ve ağaç, inşaat, kimya, şeker, cam, çimento, seramik v.s. makinelerinde.

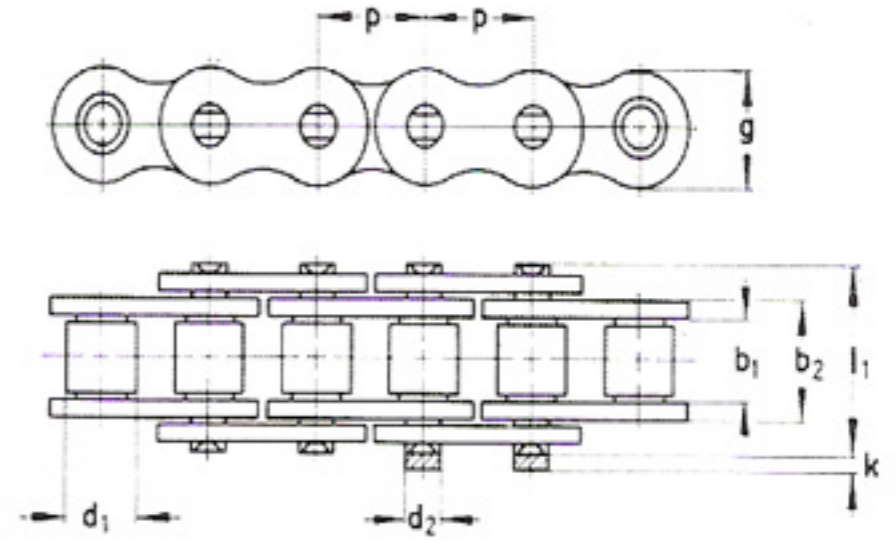
ZİNCİR ÇEŞİT VE NORMLARI

SAYFA

Makaralı Perçinli Mafsallı Tek Sıralı Zincirler B.S	01
Makaralı Perçinli Mafsallı Zincirler	02-03
Norm Harici Tek Sıralı Hususi Zincirler	04-05
Uzun Baklalı Makaralı Zincirler	06
Makarasız Zincirler	07
Sabit Burçlu Zincirler	07
Rotary API Zincirleri	08
Havai Hat Sistemi-Kulaklı Zincir Sis.-Kilit ve Yarım Bakla Çeşitleri	09
Varyatör Zincirleri	10
Galle Zincirleri	11
Cetvel	12-13
Dokuma Sanayiinde Kullanılan Zincirler	14
Dişli-Dişli Kaplinleri-V Kasnakları- Konik Sıkma Burçları	15
Taşıma Zincirleri	16
Zirai Transmiyon Zincirleri	17
Prese Çelikten Zincir Baklaları	17
Sessiz Zincirler	18-19
Fleyer Kaldırma Zincirleri	20

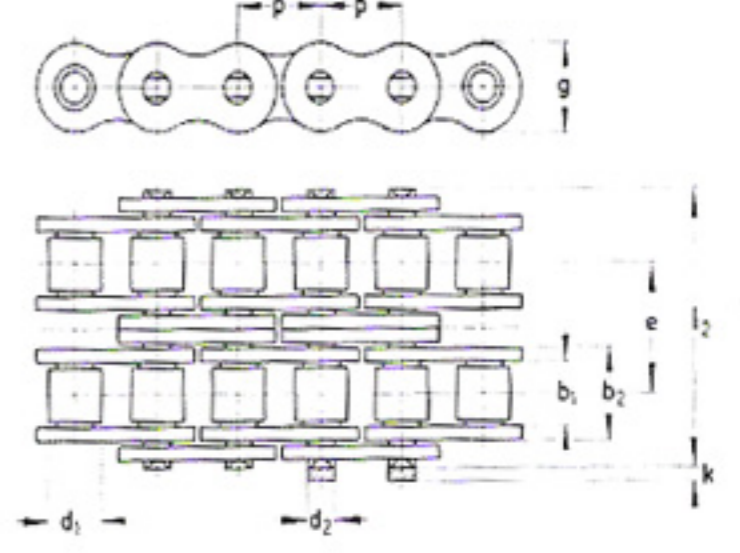
MAKARALI PERÇİNLİ MAFSALLI TEK SIRALI ZİNCİRLER B.S.

B.S
BS 228 o DIN 8180-8187
UNI 2578 o NF-E 26-101



DIN-ISO Nr.	DIN	Pratik İfade $t \times b1$	t		$b1$ Makara Genişlik mm	$d1$ Makara Kutru mm	$d2$ Perçin Kutru mm	$B2$ Azami Genişlik mm	Siklet kg/mt	Kopma Mukavemeti Kg.
			inç	Hatve mm						
	8180	5X2.5 mm	-	5	2.50	3.20	1.50	7.3	0.08	200
04-B1	8180	•6X2.8 mm	-	6	2.80	4.00	1.85	7.7	0.12	300
05-B1	8180	•8 mmX1/8"	-	8	3.15	5.00	2.30	9.1	0.18	600
06-B1	8187	3/8X1/8"			3.60	6.00	2.78	10.8	0.26	850
06-B1	8187	3/8x5/32"	3/8"	9.525	3.94	6.35	3.31	12.0	0.34	1100
06-B1	8187	•3/8x7/32"			5.90	6.35	3.31	14.0	0.41	1200
08-B1	8180	1/2x1/8"			3.50	7.75	3.68	10.6	0.31	1100
08-B1	8180	•1/2x3/16"			4.88	7.75	3.68	12.0	0.34	1100
08-B1	W	•1/2x3/16"			4.88	7.75	3.68	12.8	0.38	1400
08-B1	W	•1/2x3/16"			4.88	7.75	3.68	14.0	0.44	1550
08-B1	W	•1/2x3/16"	1/2"	12.7	4.88	7.75	3.68	14.0	0.44	1550
08-B1	W	1/2"x5.2 mm			5.21	8.51	4.45	15.	0.63	2200
08-B1	8187	•1/2x1/4"			6.40	7.75	3.97	15.9	0.49	1600
08-B1	8187	1/2x1/4"			6.40	8.51	4.45	16.9	0.67	2200
08-B1	8187	•1/2x5/16"+			7.75	8.51	4.45	18.4	0.72	2200
10-B1	W	5/8x3/16"			4.88	7.75	3.58	12.0	0.29	1100
10-B1	8187	5/8x1/4"	5/8"	15.875	6.48	10.16	5.08	17.4	0.80	2800
10-B1	8187	•5/8x3/8"			9.65	10.16	5.08	20.6	0.91	2800
12-B1	8187	•3/4x7/16"	3/4"	19.05	11.75	12.07	5.72	23.7	1.17	3400
16-B1	8187	•1"x17mm	1"	25.4	17.02	15.88	8.27	36.8	2.63	7800
20-B1	8187	•11/4x3/4"	1 1/4"	31.75	19.56	19.05	10.17	43.3	3.70	11000
24-B1	8187	•11/2x1"	1 1/2"	38.1	25.4	25.4	14.63	58.5	6.90	19000
28-B1	8187	13/4x31	1.75	44.45	30.99	27.94	15.87	74.8	10.0	22000
32-B1	8187	2x31	2.0	50.8	30.99	29.21	17.8	82.9	10.7	26000
40-B1	8187	2.5X1.5	2.5	63.5	38.1	39.7	22.87	91.2	18.0	42000
48-B1	8187	3x45	3.0	76.2	45.75	48.26	29.22	113.6	29.5	60000

MAKARALI, PERÇİNLİ, MAFSALLI ZİNCİRLER

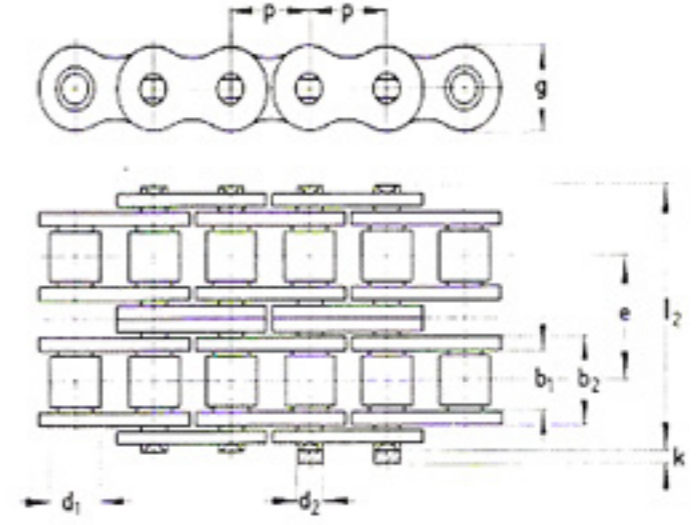


B.S.
UNI 2579-2580 o B.S. 228 o
NF.E 26.101 o DIN 8180-8187

DIN-ISO Nr.	Hatve t		Makara Genişlik b ₁		Makara Kutru d ₁		Azami Genişlik B ₂		Transversal Hatve e		Perçin Kutu d ₂ ∅		Siklet		Kopma Mukavemeti	
	inç	mm	inç	mm	inç	mm	inç	mm	inç	mm	inç	mm	lb/ft.	Kg/mt	lb.	Kg.
İKİ SIRALI																
04-82	.236	6.0	.11	2.8	.157	4.0	.547	13.9	.217	5.5	1.85	.15	.23	1210	550	
05-82	.315	8.0	.124	3.15	.197	5.0	.587	14.9	.222	5.64	2.30	.22	.33	2090	950	
06-82	3/8"	9.525	.23	5.9	.25	6.35	.965	24.5	.403	10.24	3.31	.5	.74	5300	2400	
08-82	1/2"	12.7	.305	7.75	.335	8.51	1.27	32.3	.548	13.92	4.45	.91	1.36	8800	4000	
10-82	5/8"	15.875	.38	9.65	.4	10.16	1.46	37.2	.653	16.59	5.08	1.22	1.82	12320	5600	
12-82	3/4"	19.05	.46	11.75	.475	12.07	1.705	43.3	.766	19.46	5.72	1.59	2.36	15400	7000	
16-82	1"	25.04	.67	17.02	.625	15.88	2.705	68.7	1.255	31.88	8.27	3.5	5.22	33000	15000	
20-82	1.25	31.75	.77	19.56	.75	19.05	3.138	79.7	1.435	36.45	10.17	.5	7.4	48400	22000	
24-82	1.5	38.1	1.0	25.4	1.0	25.4	4.205	106.8	1.904	48.36	14.63	.95	14.1	83600	38000	
28-82	1.75	44.45	1.22	30.99	1.1	27.94	5.29	134.36	2.345	59.56	15.87	13.47	20.00	84000	38100	
32-82	2.0	50.8	1.22	30.99	1.15	29.21	5.57	141.45	2.305	58.55	17.80	14.15	21.0	109000	49500	
40-82	2.5	63.5	1.5	38.1	1.55	39.37	6.44	163.49	2.846	72.29	22.87	24.25	36.0	176500	80000	
ÜÇ SIRALI																
06-83	3/8"	9.525	.23	5.9	.25	6.35	1.36	34.6	.403	10.24	3.31	.73	1.09	6390	2900	
08-83	1/2"	12.7	.305	7.75	.335	8.51	1.82	46.2	.548	13.92	4.45	1.36	2.02	12760	5800	
10-83	5/8"	15.875	.38	9.65	.4	10.16	2.11	53.7	.653	16.59	5.08	1.83	2.73	17600	8000	
12-83	3/4"	19.05	.46	11.75	.475	12.07	2.46	62.6	.766	19.46	5.72	2.38	3.54	22000	10000	
16-83	1"	25.4	.67	17.02	.625	15.88	3.96	100.7	1.255	31.88	8.27	5.28	7.85	48400	22000	
20-83	1.25	31.75	.77	19.56	.75	19.05	4.57	116.1	1.435	36.45	10.17	7.46	11.1	72600	33000	
24-83	1.5	38.1	1.0	25.4	1.0	25.4	6.1	155.1	1.904	48.36	14.63	14.52	21.6	125400	57000	
28-83	1.75	44.45	1.22	30.99	1.1	27.94	7.63	193.92	2.345	59.56	15.87	20.21	30.0	126800	57500	
32-83	2.0	50.8	1.22	30.99	1.15	29.21	7.87	200.0	2.305	58.55	178.0	21.56	32.00	163800	74300	

MAKARALI, PERÇİNLİ, MAFSALLI ZİNCİRLER

A.S.A.
DIN 8188 ASA



DIN-ISO Nr.	Asa No	Hatve t		İç Genişlik b1		Makara Kutru d1 Ø		Azami Genişlik B2		Çalışma Sahası e		Siklet		Kopma Mukavemeti	
		inç	mm	inç	mm	inç	mm	inç	mm	inç	mm	lb/ft.	Kg/mt	lb.	Kg.
TEK SIRALI															
04-A1	25	1/4	6.35	.125	3.18	.130	3.3	.319	8.1	.017	11	.09	.13	880	400
06-A1	35	3/8	9.525	.188	4.77	.2	5.08	.5	12.7	.042	27	.21	.31	2860	1300
—	41	1/2	12.7	.25	6.35	.305	7.75	.618	15.7	.050	32	.28	.41	2200	1000
08-A1	40	1/2	12.7	.312	7.94	.312	7.94	.685	17.4	.068	44	.40	.60	3960	1800
10-A1	50	5/8	15.875	.375	9.53	.4	10.16	.85	21.6	.109	70	.68	1.01	6160	2800
12-A1	60	3/4	19.05	.5	12.7	.469	11.9	1.06	26.9	.164	106	1.0	1.49	9240	4200
16-A1	80	1-	25.4	.625	15.88	.625	15.88	1.37	34.8	.277	179	1.69	2.52	15840	7200
20-A1	100	1 1/4	31.75	.75	19.05	.75	19.05	1.67	42.3	.406	262	2.51	3.73	24200	11000
24-A1	120	1 1/2	38.1	1.0	25.4	.875	22.22	2.09	53.0	.611	394	3.6	5.35	33900	15400
28-A1	140	1 3/4	44.45	1.0	25.4	1.0	25.4	2.26	57.5	.732	472	4.98	7.4	46300	21000
32-A1	160	2-	50.8	1.25	31.75	1.125	28.57	2.68	68.1	1.01	650	6.53	9.7	58200	26400
40-A1	200	2 1/2	63.5	1.5	38.1	1.562	39.68	3.34	84.9	1.69	1090	11.45	17.0	94800	43000

Nr.	Asa No	t		b1		d1 Ø		B2		e		Çalışma Sahası		Siklet		Kopma Mukavemeti	
		inç	mm	inç	mm	inç	mm	inç	mm	inç	mm	inç	mm	lb/ft.	Kg/mt	lb.	Kg.
İKİ SIRALI																	
04-A2	25-2	1/4"	6.35	.125	3.18	.13	3.3	.571	14.5	.252	6.4	.034	22	.17	.26	1600	720
06-A2	35-2	3/8"	9.525	.188	4.77	.2	5.08	.897	22.8	.399	10.13	.084	54	.45	.67	5300	2400
08-A2	40-2	1/2"	12.7	.312	7.94	.312	7.94	1.25	31.8	.566	14.38	.136	88	.81	1.19	7900	3600
10-A2	50-2	5/8"	15.875	.375	9.53	.4	10.16	1.562	39.7	.713	18.11	.217	110	1.29	1.92	12300	5600
12-A2	60-2	3/4"	19.05	.5	12.7	.469	11.9	1.955	49.7	.897	22.78	.329	212	2.06	3.07	20250	9200
16-A2	80-2	1"	25.4	.625	15.88	.625	15.88	2.52	64.1	1.153	29.29	.555	358	3.39	5.05	31900	14500
20-A2	100-2	1 1/4"	31.75	.75	19.05	.75	19.05	3.07	78.0	1.408	35.76	.812	524	4.91	7.31	48400	22000
24-A2	120-2	1 1/2"	38.1	1.0	25.4	.875	22.22	3.87	98.4	1.789	45.44	1.22	788	7.19	10.7	68200	31000
28-A2	140-2	1 3/4"	44.45	1.0	25.4	1.0	25.4	4.188	106.37	1.924	48.87	1.46	944	9.9	14.7	92600	42000
32-A2	160-2	2"	50.8	1.25	31.75	1.125	28.57	4.986	126.65	2.305	58.55	2.02	1300	12.87	19.1	11640	52800
40-A2	200-2	2.5"	63.5	1.5	38.1	1.562	39.68	6.159	156.45	2.817	71.55	3.38	2180	22.63	33.6	189600	86000
ÜÇ SIRALI																	
04-A3	25-3	1/4"	6.35	.125	3.18	.13	3.3	.822	20.9	.252	6.4	.051	33	.26	.39	2452	1100
06-A3	35-3	3/8"	9.525	.188	4.77	.2	5.08	1.3	33.0	.399	10.13	.126	81	.679	1.01	8150	3700
08-A3	40-3	1/2"	12.7	.312	7.94	.312	7.94	1.82	46.2	.566	14.38	.205	132	1.31	1.95	11450	5200
10-A3	50-3	5/8"	15.875	.375	9.53	.4	10.16	2.28	57.8	.713	18.11	.326	210	1.94	2.89	17600	8000
12-A3	60-3	3/4"	19.05	.5	12.7	.469	11.9	2.85	72.4	.897	22.78	.493	318	3.125	4.65	29700	13500
16-A3	80-3	1"	25.4	.625	15.88	.625	15.88	3.68	93.4	1.153	29.29	.832	537	5.087	7.57	46200	21000
20-A3	100-3	1 1/4"	31.75	.75	19.05	.75	19.05	4.48	113.8	1.408	35.76	1.218	786	7.399	11.01	72600	33000
24-A3	120-3	1 1/2"	38.1	1.0	25.4	.875	22.22	5.66	143.9	1.789	45.44	1.832	1182	10.819	16.1	92400	42000
28-A3	140-3	1 3/4"	44.45	1.0	25.4	1.0	25.4	6.112	155.24	1.924	48.87	2.2	1416	14.68	21.8	139000	63000
32-A3	160-3	2"	50.8	1.25	31.75	1.125	28.57	7.291	185.2	2.305	58.55	3.02	1950	19.4	28.8	174200	79000

NORM HARİCİ - TEK SIRALI HUSUSİ ZİNCİRLER

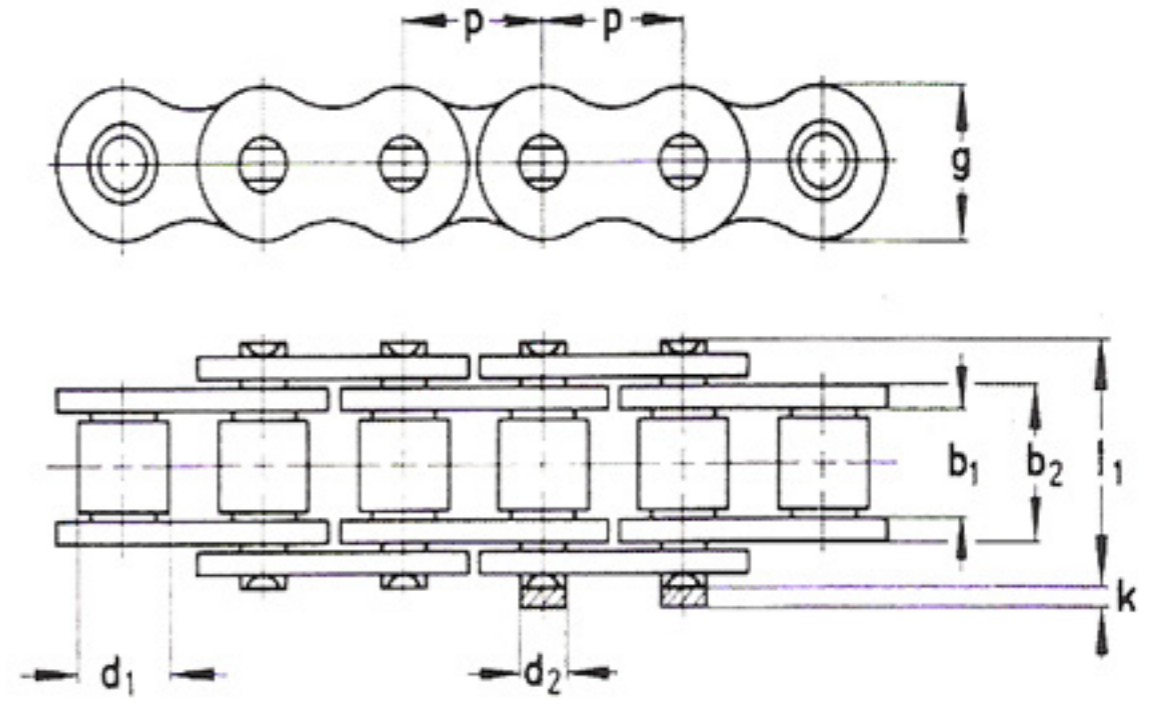
Nr.	t		b ₁ mm	b ₂ mm	d ₁ ∅ mm	d ₂ ∅ mm	f ₁ mm	f ₂ mm	g mm	Çalışma Sahası cm ²	Kopma Mukavemeti Kg.	Siklet Kg/mt
	mm	inç										
•00132	12.7	1/2x5/16	8.0	10.7	7.75	3.58	9.1	7.8	10	0.37	1000	0.45
18	12.7	1/2x3/16	4.88	9.3	7.75	4.18	8.2	7.2	11.6	0.39	1800	0.55
00463	12.7	1/2	9.53	13.5	8.51	4.45	11.0	10.0	12.0	0.56	2200	0.80
00810	15	-	6.0	10.5	9.0	4.67	12.0	10.5	11.2	0.49	1900	0.62
00815	15	-	10.0	14.3	9.0	4.67	13.7	12.3	11.2	0.65	1900	0.74
•00130	15.875	5/8x1/4	6.4	9.0	7.75	3.58	7.9	6.7	10.5	0.30	1000	0.36
00471			8.0	10.3	8.51	4.45	9.3	8.1	11.8	0.43	2000	0.63
00472	15.875	5/6	7.8	11.3	8.51	4.45	10.0	9.0	11.8	0.50	2000	0.67
00502			13.0	17.2	10.16	5.08	12.9	12.0	14.5	0.86	2800	1.12
00510			6.4	10.3	10.16	5.08	10.4	8.6	12.0	0.53	2400	0.68
00511			9.65	13.3	10.16	5.08	12.0	10.0	12.0	0.69	2400	0.78
00512			8.0	13.4	12.07	6.00	12.0	10.4	16.0	0.80	32000	1.18
00512 b			8.0	12.3	11.0	6.00	11.0	10.0	15.0	0.74	2500	0.90
00480	19.05	3/4	11.68	17.1	12.07	6.00	15.1	14.1	15.0	1.02	3800	1.33
00513 b			12.7	19.0	12.07	6.00	15.1	14.3	16.0	1.14	4000	1.56
19122 v			12.7	19.0	12.1	6.00	16.2	14.3	17.0	1.14	4200	1.80
19132			13.5	19.5	12.07	5.72	16.0	15.0	16.5	1.11	3300	1.60
00514			15.5	20.8	12.07	6.00	15.7	14.0	16.0	1.25	3200	1.53
00820	20	-	12.0	16.5	9.5	5.00	14.5	12.5	15.5	0.80	3000	0.96
00520	22.2	7/8	11.2	16.5	12.07	6.00	17.2	13.2	14.4	1.00	2200	1.10
00540			12.7	18.0	12.7	6.50	21.0	14.5	18.3	1.17	3500	1.36
00540 a			12.7	18.0	12.0	6.50	21.0	14.5	18.3	1.17	3500	1.36
00541			9.5	15.8	14.0	7.00	19.0	13.7	18.3	1.10	2800	1.49
00546			12.7	19.0	14.0	7.00	21.0	15.7	18.3	1.33	2800	1.64
00546 b	25.4	1	12.7	20.0	14.0	7.00	16.7	15.0	18.3	1.40	6700	2.30
00547			12.7	21.5	15.88	8.27	24.0	19.0	24.0	1.79	6500	2.70
00547 b			12.7	23.2	15.88	8.27	22.5	20.0	24.0	1.92	6500	3.35
00548 b			17.0	27.2	15.88	8.27	28.0	23.0	24.0	2.25	6500	3.55
25129			12.0	16.5	9.5	5.03	14.5	12.2	14.4	0.83	2500	0.85
25122			12.7	18.9	12.7	6.98	16.5	14.5	18.5	1.32	3000	1.55
25194			19.0	25.5	14.0	6.88	20.9	17.9	23.4	1.75	3000	2.50
00585 L			12.7	19.7	14.0	7.5	17.3	15.3	23.0	1.47	6500	2.30
00550			12.7	19.3	12.7	6.50	20	15	21	1.23	4350	1.40
00551			12.7	21.5	15.88	8.27	24	19	24	1.79	6500	2.50
00553	30	-	20.1	28.8	15.88	8.27	28	23	24	2.38	6500	2.85
30194			19.0	25.5	14.0	6.88	20.9	17.9	23.4	1.75	3000	2.20
00552			17.02	25.45	15.88	8.27	24.5	18.0	24	2.1	7500	2.70
00561			17.1	23.2	15.88	8.27	24	18	24	2.00	6500	2.30
00562	31.75	1 1/4	14.0	24.0	19.05	10.17	24	21	26	2.40	8500	3.44
00570			16.0	22.0	15.5	8.27	22	16	24	1.80	6500	1.95
00575	35	-	18.0	25.5	18.0	10.17	25	19	26	2.54	8500	2.75
00577			19.6	27.0	19.05	10.17	26	20	26	2.70	8500	3.05
00593			15.9	25.5	21.6	12.00	27	21	33	3.00	11500	4.00
00594			22.1	31.6	21.6	12.00	32	24	33	3.72	11500	4.50
00595			19.1	31.6	25.4	14.63	32	26	37	4.55	12000	6.87
•38131	38.1	1 1/2	13.1	19.5	11.9	5.98	17.2	14.6	16.0	1.17	3000	1.33
•38192			19.1	24.6	12.1	5.98	20.0	17.0	16.0	1.47	3000	1.36
38225			22.2	28.6	15.24	5.74	21.6	19.05	17.3	1.64	1810	1.56
•38195	38.4	-	19.1	24.6	15.9	6.92	20.0	17.0	16.0	1.47	2000	1.63
•38225			22.0	27.45	15.9	5.98	21.4	18.4	16.0	1.64	200	1.80



MEKANİK ZİNCİR

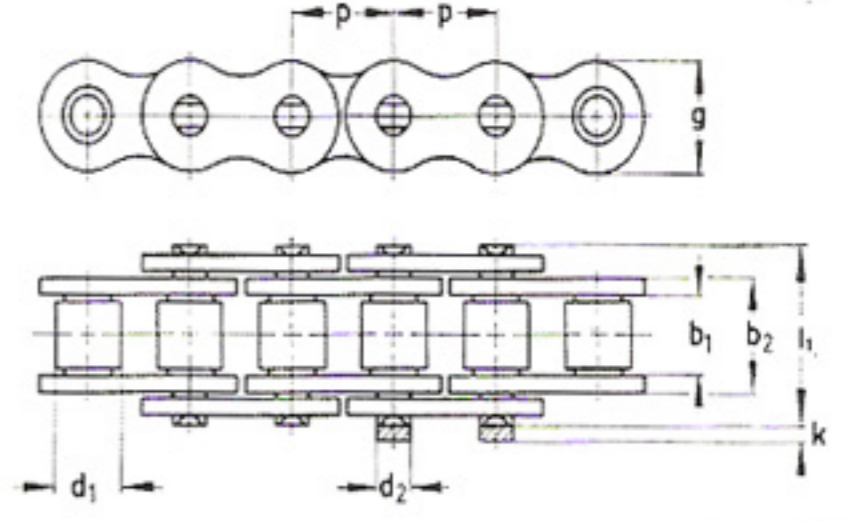
WIPPERMANN

NORM HARİCİ - TEK SIRALI HUSUSİ ZİNCİRLER



Nr.	t		b ₁ mm	b ₂ mm	d ₁ mm	d ₂ mm	f ₁ mm	f ₂ mm	g mm	Çalışma Sahası cm ²	Kopma Mukavemeti Kg.	Siklet Kg/mt
	mm	Hatve inç										
•38195	38.4	.	19.1	24.6	15.9	6.92	20.0	17.0	16.0	1.47	2000	1.63
•38225	40	.	22.0	27.45	15.9	5.98	21.4	18.4	16.0	1.64	2000	1.80
00602		.	20.1	28.5	21.6	12.00	29	21	31	3.37	12000	3.60
00603	40	.	25.0	32.5	19.05	10.117	29	23	27	3.25	8500	3.07
•40222		.	22.0	27.45	12.1	5.98	21.4	18.4	16.0	1.64	2000	1.46
40194	40.6	.	19.0	24.4	14.0	7.98	20.8	16.8	19.0	1.95	3000	1.41
•41256	41.3	.	25.5	31.5	16.0	8.98	23.9	21.4	26.0	2.83	5000	2.85
41227	41.4	.	22.0	27.45	17.8	5.98	21.4	18.4	19.0	1.64	2000	1.20
41215		.	22.0	27.45	15.9	5.98	21.4	18.4	19.0	1.64	2000	1.15
•41205	41.5	.	20.7	27.2	15.9	9.05	22.3	19.3	26.0	2.44	5000	2.80
41278	41.73	.	27.5	34.95	18.0	7.98	26.8	23.0	22.0	2.79	3500	2.48
•41259	41.91	.	25.4	31.8	19.05	5.74	22.9	20.3	17.3	1.82	2730	1.87
00608		.	13.0	20.0	19.05	10.17	19.0	16.0	28.0	2.00	8500	2.50
00611		.	25.4	37.9	25.4	14.63	37.2	26.6	41	5.54	12000	6.60
00612	44.45	13/14	22.2	38.6	27.94	15.85	39	32	41	6.05	14000	9.20
00614		.	30.0	42.5	22.2	12.00	39	29	32	5.05	12000	5.85
00651 H	50.8	2	22.2	38.8	29.21	17.85	41	32	44	6.80	26000	9.65
00660 H	57.2	2 1/4	25.4	43.0	34.3	20.30	49	38	50	9.05	36000	13.30
00661 H		.	34.3	52.0	34.3	20.30	52	42	50	10.80	36000	15.00
•00679 b	76.2	3	45.8	76.8	48.26	29.22	54.5	53.5	70	22.2	75000	29.50

UZUN BAKLALI, MAKARALI ZİNCİRLER



B.S. / DIN 8181

Nr.	Hatve t		Makara Genişlik b ₁		Makara Kutru d ₁		Azami Genişlik B ₂		Çalışma Sahası		Siklet		Kopma Mukavemeti	
	inç	mm	inç	mm	inç	mm	inç	mm	inç ²	mm ²	lb/ft.	Kg/mt	lb.	Kg.
B.S. / RIH 8181 TEK SIRALI														
LR 165	1.0	25.4	.305	7.75	.335	8.51	.728	18.5	.078	50	.349	.52	4840	2200
LR 206	1.25	31.75	.38	9.65	.4	10.16	.815	20.7	.104	67	.423	.63	6160	2800
LR 247	1.5	38.1	.46	11.75	.475	12.07	.945	24.0	.138	89	.571	.85	7480	3400
LR 3211	2.0	50.8	.67	17.02	.625	15.88	1.496	38.0	.326	210	1.41	2.1	16500	7500
LR 4012	2.5	63.5	.77	19.56	.75	19.05	1.894	48.1	.457	295	1.75	2.6	21600	9800
LR 4816	3.0	76.2	1.0	25.4	1.0	25.4	2.512	63.8	.859	554	3.04	4.51	39100	18000

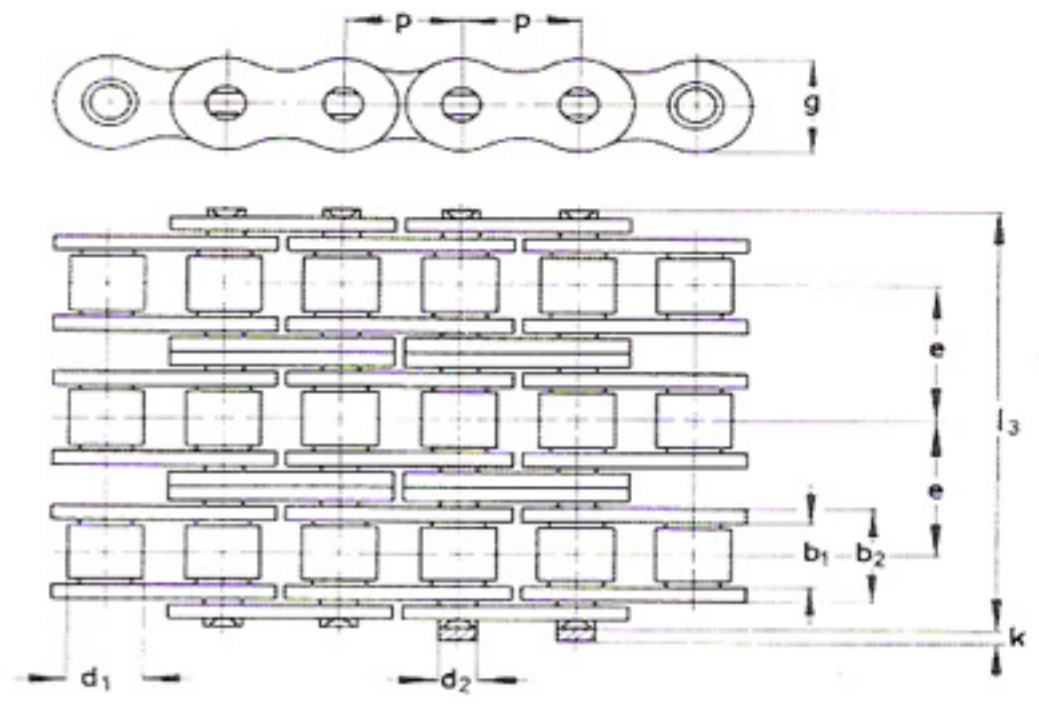
A.S.A. / DIN 8188

Nr.	Asa No	Hatve t		Makara Genişlik b ₁		Makara Kutru d ₁		Azami Genişlik B ₂		Çalışma Sahası		Siklet		Kopma Mukavemeti	
		inç	mm	inç	mm	inç	mm	inç	mm	inç ²	mm ²	lb/ft.	Kg/mt	lb.	Kg.
A.S.A. / DIN 8188 TEK SIRALI															
LR 165A	2040	1.0	25.4	.312	7.94	.312	7.94	.677	17.2	.068	44	.33	.49	3650	1650
LR 206A	2050	1.25	31.75	.375	9.53	.4	10.16	.85	21.6	.109	70	.44	.65	6200	2800
LR 248A	2060	1.5	38.1	.5	12.7	.469	11.9	1.059	26.9	.164	106	.64	.95	8600	3900
LR 3210A	2080	2.0	50.8	.025	15.88	.625	15.88	1.37	34.8	.277	179	1.3	1.93	14550	6600

Parmak Kesirleri

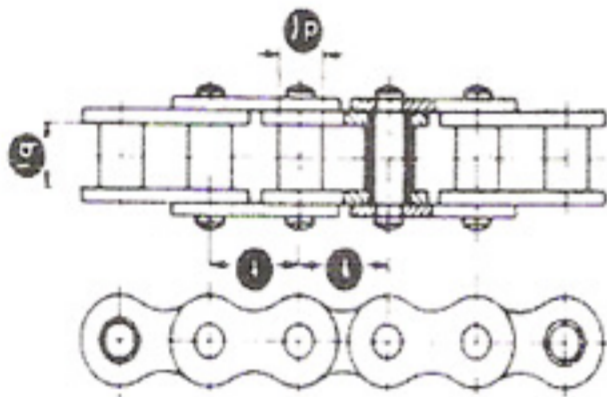
1/64 = 0.397 m/m	11/16 = 4.366 m/m	21/64 = 8.334 m/m	9/16 = 14.288 m/m	27/32 = 21.431 m/m
1/32 = 0.794	3/16 = 4.763	11/32 = 8.371	19/32 = 15.081	7/8 = 22.225
3/64 = 0.1.191	13/64 = 5.159	23/64 = 9.128	5/8 = 15.875	29/32 = 23.019
1/16 = 1.588	7/32 = 5.556	3/8 = 9.525	21/32 = 16.669	15/16 = 23.812
5/64 = 1.984	15/64 = 5.953	13/32 = 10.319	11/16 = 17.462	31/32 = 24.606
3/32 = 2.281	1/4 = 6.350	27/64 = 10.716	23/32 = 18.256	1. = 25.400
7/64 = 2.778	17/64 = 6.747	7/16 = 11.113	3/4 = 19.050	1.1/4 = 31.75
1/8 = 3.175	9/32 = 7.144	15/32 = 11.906	25/32 = 19.844	1.1/2 = 38.1
9/64 = 3.572	19/64 = 7.541	1/2 = 12.700	51/64 = 20.241	1.3/4 = 44.45
5/32 = 3.969	5/16 = 7.938	17/32 = 13.494	13/16 = 20.637	

MAKARASIZ ZINCIRLER (HÜLSEN)



DIN 73232 VE ASA/DIN 8188

Nr.	Hatve t		İç Genişlik b ₁		Makara Kutru d ₁		Genişlik B ₂		Transversal Hatve e		Çalışma Sahası		Siklet		Kopma Mukavemeti	
	inç	mm	inç	mm	inç	mm	inç	mm	inç	mm	inç ²	mm ²	lb/ft.	Kg/mt	lb.	Kg.
TEK SIRALI																
G 63 H 5	.375	9.525	.181	4.60	.197	5.0	.532	13.5			.042	27	.255	.38	2860	1300
G 65 H 5	.375	9.525	.295	7.50	.197	5.0	.65	16.5			.059	38	.275	.41	2750	1250
G 66 H 6	.375	9.525	.375	9.52	.236	6.0	.764	19.4			0.91	59	.423	.63	3080	1400
G 63 HA	.375	9.525	.188	4.77	.2	5.08	.5	12.7			.042	27	.21	.31	2860	1300
İKİ SIRALI																
D 63 H 5	.375	9.525	.181	4.60	.197	5.0	.917	23.3	.386	9.8	.085	55	.47	.70	5280	2400
D 63 HA	.375	9.525	.188	4.77	.2	5.08	.898	22.8	.399	10.13	.084	54	.45	.67	5280	2400
ÜÇ SIRALI																
Tr 63 H 5	.375	9.525	.181	4.60	.197	5.0	1.331	33.8	.4	10.15	.129	83	.719	1.07	8140	3700
Tr 63 HA	.375	9.525	.188	4.77	.2	5.08	1.229	33.0	.399	10.13	.126	81	.679	1.01	8140	3700



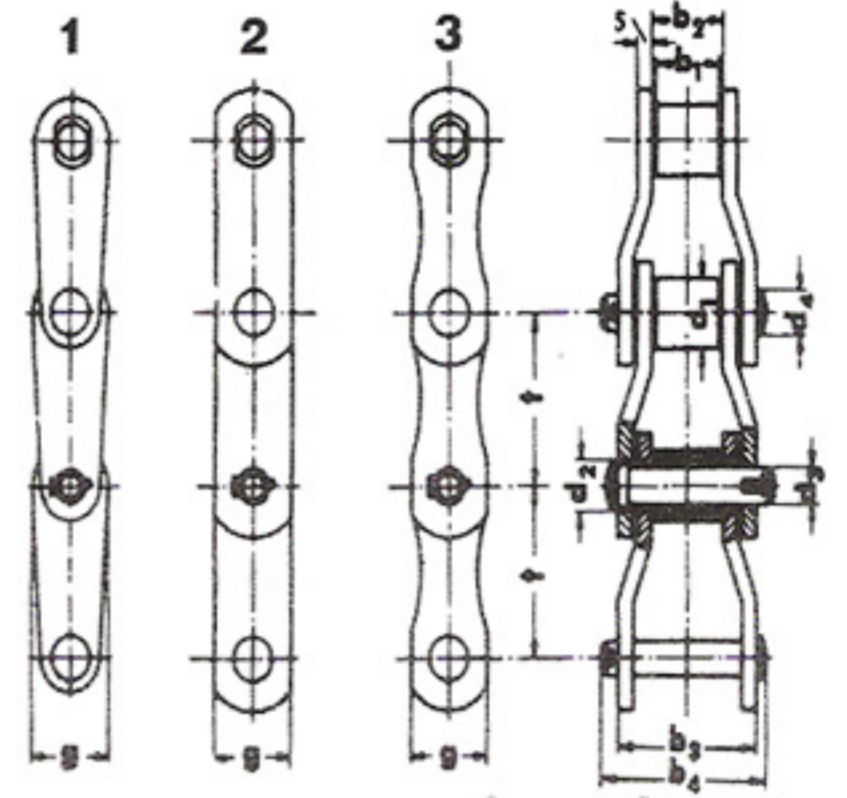
SABİT BURÇLU ZİNCİRLER

DIN 8164

Nr.	Hatve t		İç Genişlik b ₁		Pim Kutru d ₁		Azami Genişlik B ₂		Çalışma Sahası		Siklet		Kopma Mukavemeti	
	inç	mm	inç	mm	inç	mm	inç	mm	inç ²	mm ²	lb/ft.	Kg/mt	lb.	Kg.
00200	.59	15	.551	14	.354	9	1.260	32	.172	111	.692	1.03	4840	2000
00203	.787	20	.630	16	.472	12	1.496	38	.285	184	1.357	2.02	8360	3800
00206	.984	25	.709	18	.59	15	1.693	43	.388	250	1.747	2.60	11000	5000
00209	1.181	30	.787	20	.669	17	1.929	49	.494	319	2.251	3.35	14300	6500
00212	1.378	35	.866	22	.709	18	2.126	54	.577	372	2.419	3.60	17600	8000
00215	1.575	40	.984	25	.787	20	2.402	61	0.781	504	3.797	5.65	22000	10000
00218	1.772	45	1.181	30	.866	22	2.756	70	1.066	688	5.006	7.47	28600	13000
00221	1.969	50	1.378	35	1.024	26	3.11	79	1.339	864	6.518	9.70	35200	16000
00222	2.165	55	1.772	45	1.181	30	3.898	99	1.953	1260	8.602	12.80	44000	20000
00223	2.362	60	1.969	50	1.26	32	4.095	104	2.319	1496	9.946	14.80	57200	26000
00224	2.559	65	2.165	55	1.417	36	4.449	113	2.942	1898	14.986	22.30	70400	32000
00225	2.756	70	2.559	65	1.575	40	5.158	131	4.045	2610	16.598	24.70	88000	40000

ROTARY - API ZİNCİRLERİ

DIN O 8182 - DIN O 8188 / ASA
VE FABRİKA NORMU



PLAKA ÇEŞİTLERİ

Nr.	Standart	Hatve		İç Genişlik		Makara Kutru		Azami Genişlik		Kopma Mukavemeti	
		inç	mm	inç	mm	inç	mm	inç	mm	lb.	Kg.
3140	DIN 8188/ASA	44.45	1.75	25.4	1.0	25.4	1.0	63.0	2.48	21000	46200
3150	DIN 8188/ASA	50.8	2.0	31.75	1.25	28.57	1.125	73.0	2.87	26000	57200
3160	DIN 8188/ASA	50.8	2.0	31.75	1.25	28.57	1.125	68.1	2.68	26000	57200
2065	W	50.8	2.0	31.75	1.25	28.57	1.125	80.0	3.15	33000	72500
3180	W	63.5	2.5	38.1	1.5	31.75	1.25	85.0	3.35	31750	70000
3200	DIN 8188/ASA	63.5	2.5	38.1	1.5	39.68	1.56	93.0	3.66	43000	95000
3300	W	66.27	2.609	28.57	1.125	22.23	.875	66.0	2.60	11000	24200
3522	W	67.056	2.639	27.0	1.06	28.57	1.125	65.0	2.56	18000	39600
R 2 P	A.P.I.	77.9	3.067	38.7	1.52	41.28	1.625	97.5	3.84	45300	99660
•R 3	DIN 8182	78.105	3.075	38.1	1.5	31.75	1.25	90.0	3.15	32000	70000
R 3 P	A.P.I.	78.105	3.075	38.1	1.5	31.75	1.25	100.0	3.94	34000	75000
•R 31/8	DIN 8182	79.375	3.125	40.48	1.59	41.275	1.625	112.0	4.41	50000	110000
R 31/8 W	DIN 8182	79.375	3.125	41.28	1.625	41.28	1.625	112.0	4.41	50000	11000
R 31/2	W	88.898	3.5	38.1	1.5	44.45	1.75	98.0	3.86	63560	139830
R 31/2 A	W	88.898	3.5	38.1	1.5	44.45	1.75	107.0	4.21	55400	122880
R 4	API /DIN 8182	103.2	4.063	49.2	1.937	44.45	1.75	137.0	5.39	68000	150000
R 4 P	W	103.2	4.063	49.2	1.937	44.45	1.75	138.0	5.43	77000	170000
R 4 PH	API 4 H	103.45	4.073	49.0	1.929	45.25	1.78	130.0	5.12	77000	170000
Ro 41/2	ASA 3618	114.3	4.5	52.4	2.062	57.15	2.25	134.0	5.275	100000	220458
R 5	W	127.0	5.0	69.85	2.75	63.5	2.5	168.0	6.61	109000	240000
R 5 A	W	127.0	5.0	69.85	2.75	64.0	2.52	164.0	6.46	125000	275000
R 6	W	152.4	6.0	76.2	3.0	76.2	3.0	183.0	7.20	190680	419500

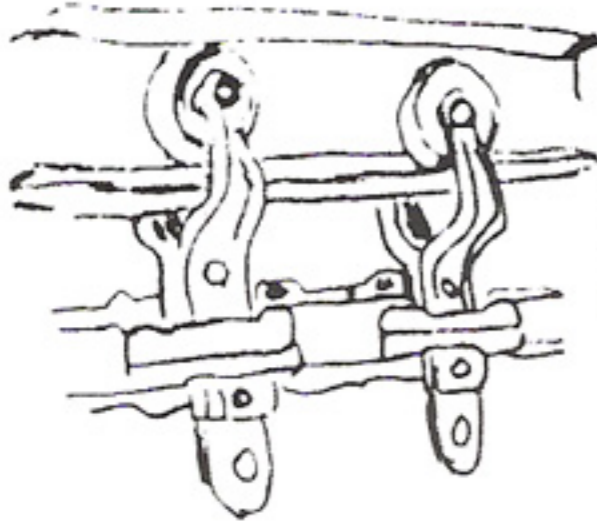


MEKANİK ZİNCİR

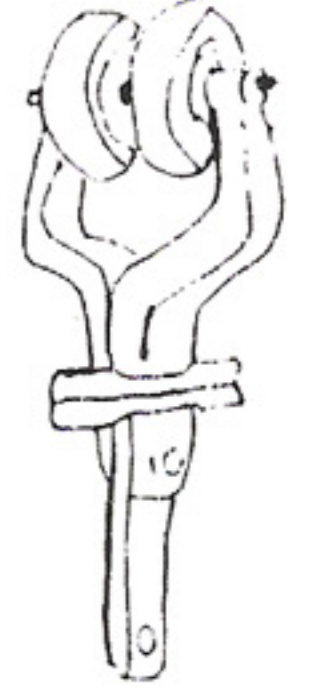
WIPPERMANN



HAVAI HAT SİSTEMİ



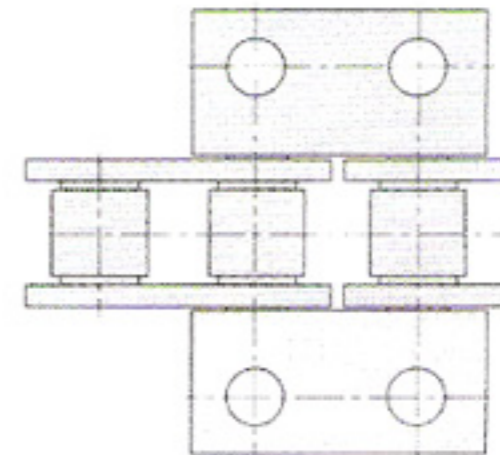
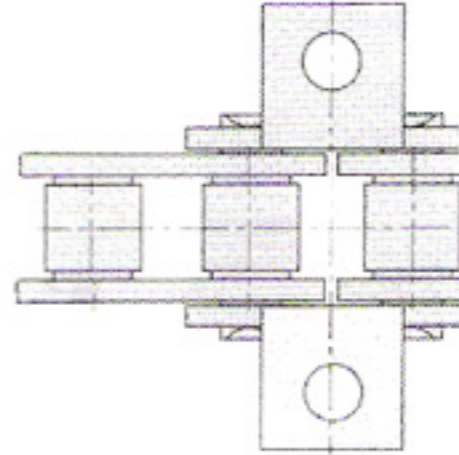
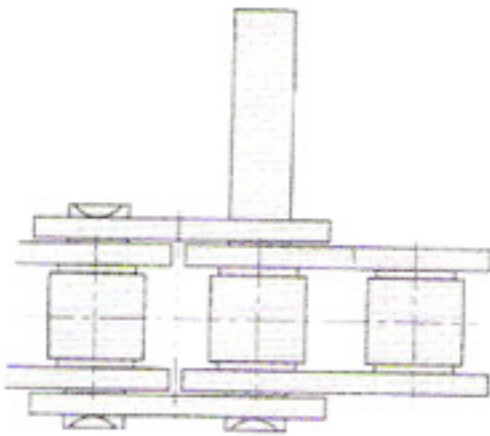
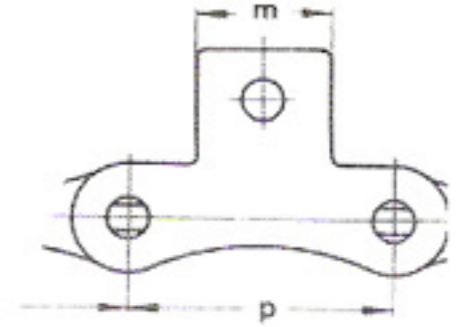
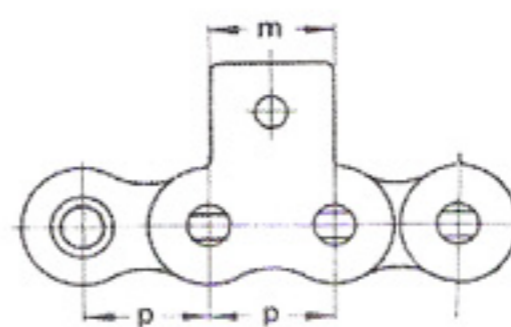
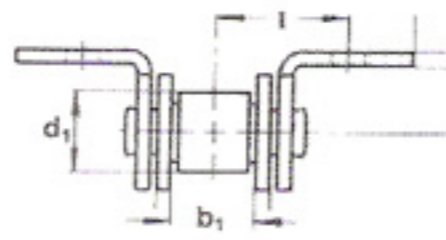
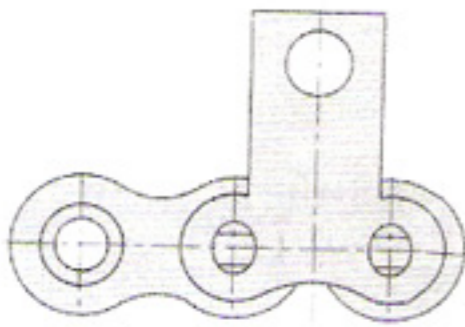
I demirde
zincirli askı arabası



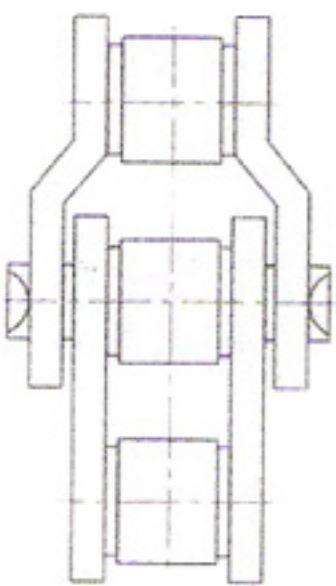
Rulmanlı trolley
(askı arabası)

Sifero dökümden havai hat zinciri 3" ve 4"
Kopma Mukavemeti : 3500 - 6200 kg.
Azami irtifa : 1.50 mt.

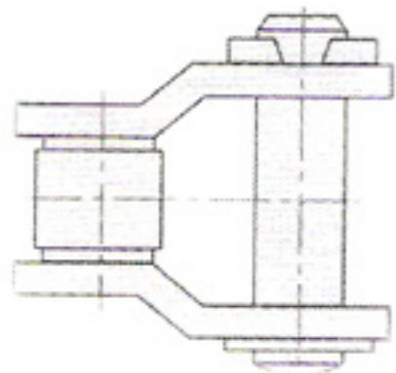
KULAKLI ZİNCİR ÇEŞİTLERİ



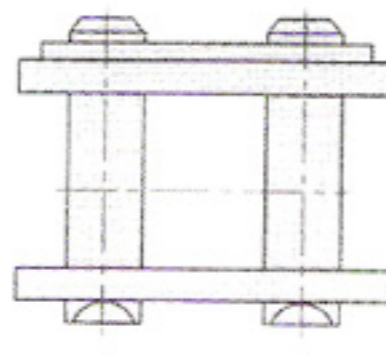
KİLİT VE YARIM BAKLA KİLİTLERİ



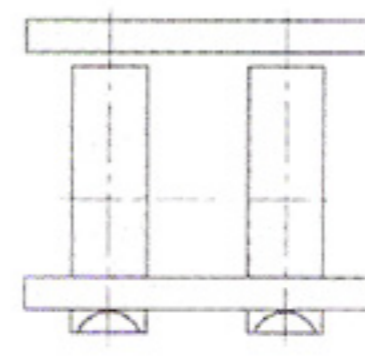
2"li 1/2
bakla



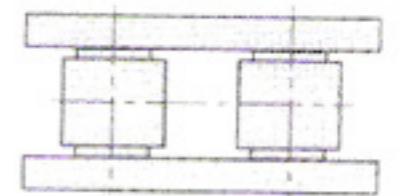
1/2 bakla



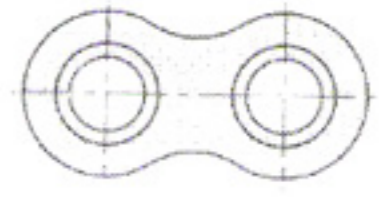
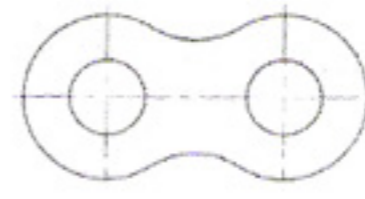
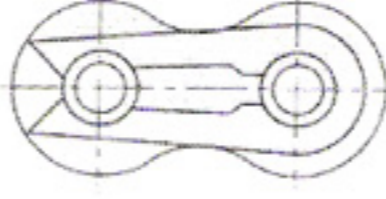
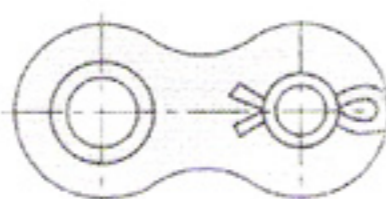
kilit



perçin



iç bakla



VARYATÖR ZİNCİRLERİ

PIN

A-SİSTEMİ - LAMELLİ : AKO - A1 - A2 - A3
A4 - A5 - A6 Tipleri

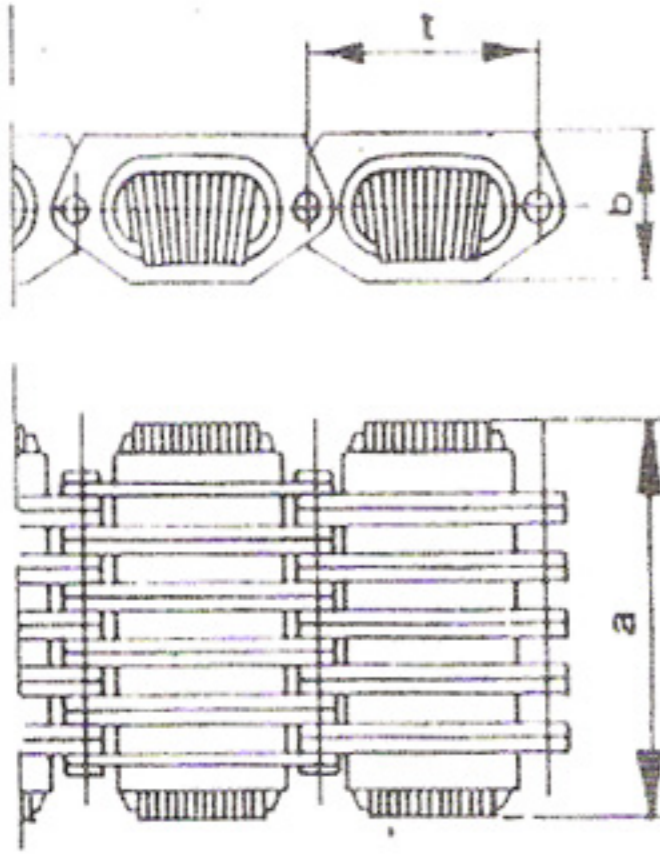
R-SİSTEMİ - RULMANLI : Rb0 - Rb1 - Rb2 - Rb3
Rb4 - Rc3 - Rc4 Tipleri

RS SİSTEMİ

HALKA RULMANLI

WD-SİSTEMİ: Özel salgılı pimli

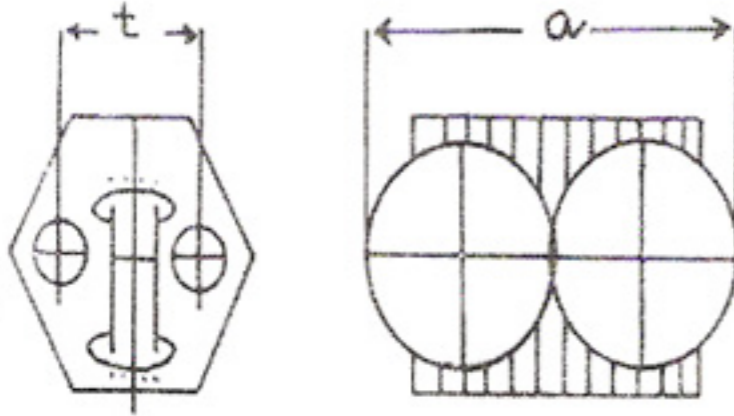
A
Tipi



SİSTEM A LAMELLİ

	A1	A2	A3	A4	A5	A6
HATVE (t)	19.0	24.9	28.6	35.8	35.8	44.4
YÜKSEKLİK (b)	10	13.5	15.9	20.6	20.6	23.8
GENİŞLİK (a)Yeni	31	37.8	44.4	58.4	70	77.2
GENİŞLİK (a)Kullanılmış	28.6	35	40.6	54.5	65.2	72

RB
RC
Tipi



SİSTEM R RULMANLI

	Rb0	Rb-1	Rb-2	Rb-3	Rb-4	Rc-3	Rc-4
HATVE (t)	10	12	14.5	12.3	14	13.3	16
GENİŞLİK (a)	12	16	20		31.0	24.6	31

SİSTEM WD ÖZEL SALGILI PİMLİ

	WD 21	WD24	WD34
HATVE (t)	11.30	14.5	14.5
GENİŞLİK (a)	21	24	34

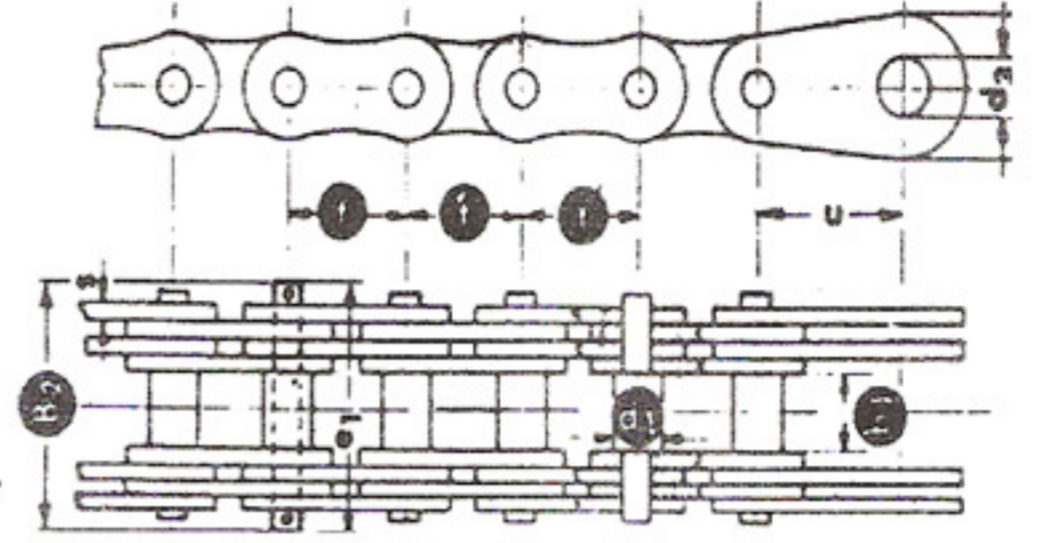


MEKANİK ZİNCİR

WIPPERMANN



GALLE ZİNCİRLERİ



DIN 8150

Nr.	Hatve		Makara Genişlik		Makara Kutru		Azami Genişlik		Plaka Adedi	Çalışma Sahası		Siklet		Kopma Mukavemeti	
	inç	mm	inç	mm	inç	mm	inç	mm		inç ²	mm ²	lb/ft.	Kg/mt	lb.	Kg.
G 3	.138	3.5	.0787	2	.0787	2	.276	7	2	.0026	1.7	.047	.07	132	60
G 4	.165	4.2	.0787	2	.0787	2	.283	7.2	2	.003	1.95	.054	.08	154	70
G 6/1	.236	6	.138	3.5	.0984	2.5	.323	8.2	2	.0037	2.4	.081	.12	198	90
G 6/2	.236	6	.157	4	.118	3	.443	11	2	.007	4.6	.108	.16	286	130
G 8	.315	8	.236	6	.138	3.5	.630	16	2	.0078	5	.168	.25	330	150
G 10	.394	10	.315	8	.157	4	.748	19	2	.0140	9	.269	.40	550	250
G 13	.51	13	.394	10	.197	5	.906	23	2	.025	16	.383	.57	1100	500
G 15	.59	15	.472	12	.197	5	1.024	26	2	.025	16	.470	.70	2100	950
G 17	.669	17	.512	13	.236	6	1.024	26	2	.031	20	.551	.82	1650	750
G 20	.787	20	.59	15	.315	8	1.26	32	2	.37	24	.672	1.00	4150	1880
G 25	.984	25	.709	18	.394	10	1.614	41	2	.074	48	1.223	1.82	8300	3750
G 30	1.181	30	.787	20	.433	11	2.126	54	4	.167	108	2.043	3.04	13200	6000
G 35	1.378	35	.866	22	.472	12	2.362	60	4	.186	120	2.654	3.95	19850	9000
G 40	1.575	40	.984	25	.551	14	2.56	65	4	.223	144	3.427	5.10	26450	12000
G 45	1.772	45	1.181	30	.669	17	2.677	68	4	.26	168	4.402	6.55	33100	15000
G 50	1.968	50	1.378	35	.866	22	3.70	94	4	.502	324	7.594	11.30	49600	22500
G 55	2.165	55	1.575	40	.945	24	4.173	106	4	.781	504	9.744	14.50	66150	30000
G 60	2.362	60	1.772	45	1.024	26	4.685	119	4	.856	552	11.491	17.10	82700	37500
G 65	2.56	65	1.772	45	1.102	28	4.882	124	6	1.046	675	13.507	20.10	99200	45000
G 70	2.756	70	1.969	50	1.26	32	5.748	146	6	1.565	1010	21.504	32.00	123500	56000
G 75	2.953	75	2.165	55	1.339	34	6.299	160	6	1.395	900	23.520	35.00	93500	42500
G 80	3.15	80	2.362	60	1.417	36	6.693	170	6	1.786	1152	25.670	38.20	110000	50000
G 85	3.347	85	2.56	65	1.496	38	7.717	196	8	2.108	1360	31.584	47.00	136400	62000
G 90	3.543	90	2.756	70	1.575	40	7.835	199	6	2.356	1520	35.616	53.00	165000	75000
G 100	3.937	100	3.15	80	1.772	45	9.37	238	8	3.557	2295	51.542	76.70	220000	100000
G 110	4.33	110	3.543	90	1.969	50	9.843	250	8	3.918	2528	60.48	90.00	275000	125000
G 120	4.72	120	3.937	100	2.165	55	10.866	276	8	4.96	3200	75.264	112.00	330000	150000

DIŞLİ ÇAPINA GÖRE DIŞ SAYISINI GÖSTERİR

Diş Adedi	8.00 mm	3/8 9.53 mm	1/2 12.70 mm	5/8 15.88 mm	3/4 19.05 mm	1 25.40 mm	1 1/4 31.75 mm	1.5 38.10 mm	1 3/4 44.45 mm	2 50.80 mm	2.5 63.50 mm	3 76.20 mm	3.5 88.90 mm	4 101.60 mm
9	28.7	33.5	44.5	56.4	68.1	90.9	114.8	133.9	158.8	186.0	227.9	271.8	320.8	363.7
10	30.7	35.8	47.8	60.5	72.9	97.6	123.2	143.8	170.5	199.2	244.4	291.6	343.9	389.9
11	32.8	38.6	51.3	64.8	78.0	104.4	131.9	154.0	182.4	212.9	261.4	312.2	367.8	417.3
12	35.1	41.2	54.9	69.4	83.3	111.5	140.5	164.6	194.8	226.8	279.2	333.3	392.4	445.8
13	38.4	45.0	60.0	75.5	91.0	121.4	152.9	180.1	212.4	246.2	304.1	363.5	427.2	485.7
14	40.7	47.8	63.8	80.3	96.5	129.1	162.3	191.3	225.3	261.1	322.6	385.8	453.4	515.6
15	43.0	50.6	67.6	84.9	102.1	136.4	171.7	202.7	238.8	276.4	341.6	408.7	479.8	545.9
16	45.5	53.6	71.4	89.7	108.0	144.0	181.1	214.2	252.0	291.6	360.7	431.6	506.5	576.3
17	47.8	56.4	75.2	94.5	113.6	151.9	190.8	225.6	265.5	306.9	379.7	454.4	533.4	607.1
18	50.3	59.2	79.0	99.3	119.4	159.5	200.4	237.3	278.9	322.4	399.3	477.8	560.3	638.1
19	52.6	62.2	82.8	104.2	125.2	167.4	210.1	248.7	292.6	337.9	418.6	500.9	587.5	669.1
20	55.9	66.3	88.4	110.8	133.1	177.8	222.8	265.0	310.7	356.9	444.3	532.4	622.8	710.5
21	58.4	69.1	92.2	115.8	139.2	185.7	232.4	276.6	324.4	372.6	464.1	556.0	650.5	742.0
22	61.0	72.2	96.3	120.7	145.1	193.6	242.3	288.6	338.4	388.6	483.8	579.7	678.2	773.5
23	63.5	75.2	100.1	125.8	150.9	201.4	252.2	300.3	352.1	404.4	503.7	606.3	705.9	805.2
24	65.8	78.3	104.2	130.6	157.0	209.3	262.2	312.2	366.0	420.2	523.5	627.1	733.6	837.0
25	68.4	81.0	108.2	135.7	162.8	217.4	272.1	324.1	380.0	436.2	543.3	651.0	761.5	868.7
26	70.9	84.1	112.0	140.5	168.9	225.3	282.0	336.1	393.7	451.9	563.1	674.9	789.2	900.5
27	73.4	86.9	115.8	145.6	174.8	233.2	292.1	347.8	407.7	468.4	583.2	698.8	817.4	932.5
28	76.0	89.9	119.9	150.4	180.9	241.3	302.0	359.7	421.7	484.1	603.3	722.7	845.3	964.2
29	78.5	93.0	124.0	155.5	186.7	249.2	312.2	371.6	435.6	500.1	623.1	746.5	873.3	996.2
30	81.0	96.0	127.8	160.6	192.8	257.3	322.1	383.8	449.6	516.1	643.2	770.4	901.2	1028.2
31	83.6	99.1	131.9	165.4	198.6	265.2	332.0	395.8	463.6	532.1	663.0	794.5	929.1	1060.2
32	86.1	101.9	135.9	170.5	204.7	273.3	342.2	407.7	477.6	548.1	683.0	814.4	957.1	1092.2
33	88.4	104.9	140.0	175.5	210.8	281.2	352.1	419.6	491.8	564.1	703.1	842.5	985.3	1124.2
34	91.0	108.0	143.8	180.4	216.7	289.3	362.0	431.8	505.7	580.2	723.2	866.4	1013.2	1156.2
35	93.5	111.0	147.9	185.4	222.8	297.2	372.1	443.8	519.7	596.2	743.2	890.5	1041.2	1188.2
36	96.0	114.1	151.9	190.5	228.9	305.3	382.0	455.8	533.7	612.2	763.0	914.7	1069.4	1220.2
37	98.6	116.9	156.0	195.6	234.7	313.2	392.2	467.9	547.7	628.4	783.1	938.8	1097.3	1252.5
38	101.1	119.9	160.0	200.4	240.8	312.3	402.1	479.8	561.9	644.4	803.2	962.7	1125.5	1284.5
39	103.7	123.0	163.8	205.5	246.9	329.2	412.3	491.8	575.9	660.4	823.2	986.8	1153.7	1316.5
40	106.2	126.0	167.9	210.6	252.8	337.3	422.4	503.7	589.8	676.9	843.5	1010.9	1181.9	1348.8
41	108.7	129.0	172.0	215.4	258.9	345.5	432.3	515.6	604.0	692.9	863.6	1035.1	1210.1	1381.0
42	111.3	132.1	175.8	220.5	264.9	353.3	442.5	527.8	618.0	708.9	883.7	1059.2	1238.3	1413.0
43	113.8	134.9	179.8	225.6	270.8	361.5	452.4	539.8	632.2	725.2	903.8	1083.3	1266.5	1445.3
44	116.4	138.0	183.9	230.7	276.9	369.6	462.6	552.0	646.2	741.2	923.8	1107.5	1294.4	1477.3
45	118.9	141.0	188.0	235.7	283.0	377.5	472.7	563.9	660.2	757.2	943.8	1131.6	1322.6	1509.5
46	121.4	144.0	192.0	240.6	289.1	385.6	482.6	576.1	674.4	773.5	964.2	1155.7	1350.8	1540.5
47	124.0	147.1	196.1	245.6	294.9	393.7	492.8	588.0	688.4	789.5	984.3	1179.9	1379.0	1572.8
48	126.5	150.1	199.9	250.7	301.0	401.6	502.7	600.2	702.6	805.5	1004.3	1204.0	1407.2	1605.3
49	129.1	153.2	204.0	255.8	307.1	409.7	512.8	612.2	716.6	821.7	1024.4	1228.1	1435.4	1637.6
50	131.6	156.2	208.0	260.9	313.2	417.9	523.0	624.3	730.8	837.7	1044.5	1252.2	1463.6	1669.8
51	134.1	159.0	212.1	265.7	319.0	425.7	532.9	636.3	744.8	853.7	1064.8	1276.4	1491.5	1702.1
52	136.7	162.1	216.2	270.8	325.1	433.9	543.1	648.5	758.7	870.0	1084.8	1300.5	1519.7	1734.6
53	139.2	165.1	220.2	275.9	331.2	442.0	553.2	660.4	773.0	886.0	1104.9	1324.6	1547.9	1766.8
54	141.8	168.2	224.3	280.9	337.3	450.1	563.2	672.6	786.9	902.2	1125.2	1348.8	1576.1	1799.1
55	144.3	171.2	228.1	286.0	343.4	458.0	573.3	684.6	801.2	918.2	1145.3	1372.9	1604.3	1831.4
56	146.8	174.3	232.2	290.9	349.3	466.1	583.2	696.7	815.1	934.5	1165.4	1397.3	1632.5	1863.9
57	149.4	177.3	236.2	295.9	355.4	474.2	593.4	708.9	829.3	950.5	1185.4	1421.4	1660.9	1896.1
58	152.0	180.4	240.3	301.0	361.5	482.1	603.5	720.9	843.6	966.5	1205.8	1445.5	1689.1	1928.3
59	154.4	183.4	244.4	306.1	367.6	490.2	613.4	733.1	857.5	982.7	1225.8	1469.7	1717.3	1960.6
60	157.0	186.2	248.4	311.2	373.7	498.4	623.6	745.0	871.7	998.7	1245.9	1493.8	1745.5	1993.2
61	159.5	189.3	252.5	316.3	379.5	506.5	633.8	757.2	885.7	1015.0	1266.2	1518.2	1773.7	2025.4
62	162.1	192.3	256.3	321.1	385.6	514.4	643.7	769.4	899.9	1031.0	1286.3	1542.3	1801.9	2057.7
63	164.6	195.4	260.4	326.2	391.7	522.5	653.8	781.3	913.9	1047.3	1306.3	1566.4	1830.1	2089.4
64	167.2	198.4	264.4	331.2	397.8	530.6	664.0	793.5	928.2	1063.3	1326.7	1590.6	1858.3	2121.7
65	169.7	201.4	268.5	336.3	403.9	538.7	674.1	805.7	942.1	1079.5	1346.7	1615.0	1886.5	2153.9
66	172.2	204.5	272.6	341.4	409.7	546.6	684.0	817.6	956.3	1095.5	1367.1	1639.1	1914.7	2186.2
67	174.8	207.5	276.6	346.5	415.8	554.8	694.2	829.8	970.6	1111.8	1387.1	1663.2	1943.1	2218.4
68	177.3	210.6	280.7	351.6	421.9	562.9	704.4	841.8	984.5	1127.8	1407.2	1687.3	1971.3	2250.7
69	179.9	213.6	284.8	356.4	428.0	571.0	714.3	854.0	998.8	1144.0	1427.5	1711.7	1999.5	2283.0
70	182.4	216.7	288.6	361.4	434.1	578.9	724.4	866.2	1012.7	1160.0	1447.6	1735.9	2027.7	2315.2
71	184.9	219.5	292.6	366.5	440.2	587.0	734.6	878.1	1026.9	1176.3	1467.9	1760.0	2055.9	2347.5
72	187.5	222.5	296.7	371.6	446.0	595.1	744.5	890.3	1040.9	1192.3	1487.9	1784.1	2084.1	2380.0
73	190.0	225.6	300.8	376.7	452.1	603.3	754.7	902.5	1055.2	1208.5	1508.1	1808.5	2112.5	2412.3
74	192.5	228.6	304.8	381.8	458.2	611.1	764.8	914.4	1069.4	1224.8	1528.3	1832.6	2140.7	2444.5
75	195.1	231.7	308.9	386.9	464.3	619.3	775.0	926.6	1083.3	1240.8	1548.4	1856.8	2168.9	2476.8
76	197.6	234.7	313.0	391.7	470.4	627.4	784.9	938.8	1097.5	1257.1	1568.7	1881.1	2197.1	2509.0
77	200.2	237.8	317.0	396.8	476.5	635.5	795.0	950.7	1111.5	1273.1	1588.8	1905.3	2225.3	2541.3
78	202.7	240.8	312.1	401.9	482.4	643.7	805.2	962.9	1125.8	1289.3	1609.1	1929.4	2253.8	2573.5
79	205.2	243.9	324.9	406.9	488.5	651.5	815.1	975.1	1140.0	1305.3	1629.2	1953.8	2282.0	2605.8
80	207.8	246.9	329.0	412.0	494.6	659.7	825.5	986.8	1154.0	1321.8	1649.5	1977.9	2310.4	2638.3

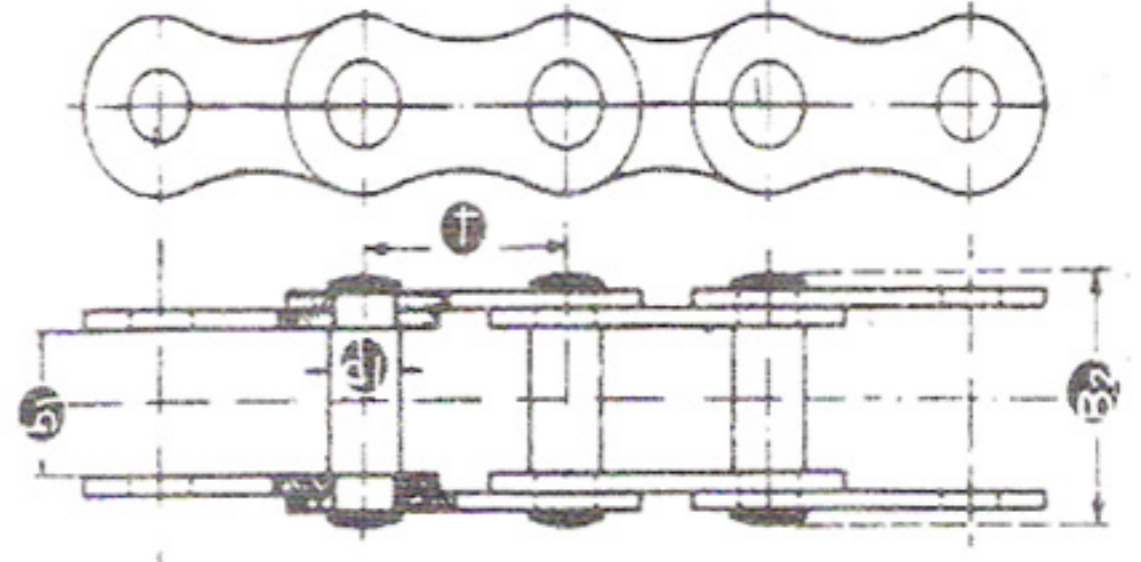


DİŞLİ ÇAPINA GÖRE DİŞ SAYISINI GÖSTERİR

Dış Adedi	8.00 mm	3/8 9.53 mm	1/2 12.70 mm	5/8 15.88 mm	3/4 19.05 mm	1 25.40 mm	1 1/4 31.75 mm	1.5 38.10 mm	1 3/4 44.45 mm	2 50.80 mm	2.5 63.50 mm	3 76.20 mm	3.5 88.90 mm	4 101.60 mm
81	210.3	249.7	333.0	417.1	500.7	667.8	835.4	999.0	1168.2	1338.1	1669.6	2002.1	2338.6	2670.6
82	212.9	252.8	337.1	421.9	506.8	675.9	845.6	1011.2	1182.4	1354.1	1689.9	2367.0	2826.4	2702.8
83	215.4	255.8	341.1	427.0	512.6	683.6	855.8	1023.1	1196.4	1370.4	1710.0	2050.6	2395.2	2735.1
84	217.9	258.9	345.2	432.1	518.7	691.9	865.9	1035.3	1210.6	1386.6	1730.3	2074.7	2423.4	2767.3
85	220.5	261.9	349.3	437.2	524.8	700.0	875.8	1047.5	1224.6	1402.6	1750.3	2099.1	2451.6	2799.6
86	223.0	264.9	353.1	442.2	530.9	708.2	886.0	1059.5	1238.8	1418.9	1770.7	2123.2	2480.1	2831.9
87	225.6	268.0	357.1	447.3	537.0	716.3	896.0	1071.7	1253.0	1434.9	1790.7	2147.3	2508.3	2864.1
88	228.1	271.0	361.2	452.4	543.1	724.2	906.3	1083.9	1267.0	1451.1	1811.0	2171.7	2536.5	2896.6
89	230.7	274.1	365.3	457.2	548.9	732.3	916.2	1095.8	1281.2	1467.1	1831.1	2195.9	2564.7	2928.9
90	233.2	277.1	369.3	462.3	555.0	740.4	926.4	1108.0	1295.4	1483.4	1851.4	2220.0	2593.1	2961.1
91	235.7	280.2	373.4	467.4	561.1	748.6	936.5	1120.2	1309.4	1499.6	1871.5	2244.4	2621.3	2993.4
92	238.3	283.2	377.5	472.5	567.2	756.7	946.4	1132.1	1323.6	1515.6	1891.8	2268.5	2649.5	3025.7
93	240.8	286.0	381.5	477.5	573.3	766.6	956.6	1144.3	1337.6	1531.9	1911.9	2292.9	2677.7	3057.9
94	243.9	289.1	385.6	482.6	579.4	772.7	966.8	1156.5	1351.8	1547.9	1932.0	2317.0	2706.1	3090.4
95	245.9	292.1	389.7	487.7	585.5	780.8	976.9	1168.4	1366.0	1564.2	1952.3	2341.1	2734.3	3122.7
96	248.4	295.2	393.5	492.8	591.3	789.0	986.8	1180.6	1380.0	1580.2	1972.3	2365.5	2762.5	3155.0
97	251.0	298.2	397.5	497.6	597.4	797.1	997.0	1192.8	1394.2	1596.4	1992.7	2389.7	2791.0	3187.2
98	253.5	301.3	401.6	502.7	603.5	805.0	1007.1	1204.7	1408.4	1612.7	2012.7	2413.8	2819.2	3219.5
99	256.1	304.3	405.7	507.8	609.6	813.1	1017.3	1216.9	1422.4	1628.7	2033.0	2438.2	2847.4	3251.7
100	258.6	307.4	409.7	512.9	615.7	821.2	1027.2	1229.1	1436.6	1644.9	2053.1	2462.3	2875.6	3284.2
101	261.1	310.4	413.8	517.9	621.8	829.3	1037.4	1241.3	1450.9	1660.9	2073.4	2486.7	2904.0	3316.5
102	263.7	313.5	417.9	523.0	627.7	837.2	1047.5	1253.3	1464.9	1677.2	2093.5	2510.8	2932.2	3348.8
103	266.2	316.5	421.9	528.1	633.8	845.3	1057.7	1265.5	1479.1	1693.4	2113.8	2535.0	2960.4	3381.0
104	268.8	319.5	426.0	533.2	639.9	853.5	1067.6	1277.7	1493.3	1709.4	2133.9	2559.3	2988.9	3413.3
105	271.3	322.6	430.0	538.0	646.0	861.6	1077.7	1289.6	1507.3	1725.7	2154.2	2583.5	3017.0	3445.8
106	273.8	325.4	433.9	543.1	652.0	869.7	1087.9	1301.8	1521.5	1741.7	2174.3	2607.8	3045.2	3478.0
107	276.4	328.4	437.9	548.2	658.1	877.8	1098.1	1314.0	1535.5	1758.0	2194.6	2632.0	3073.7	3510.3
108	278.9	331.5	442.0	553.5	664.2	885.7	1108.0	1325.9	1549.7	1774.2	2214.7	2656.1	3101.9	3542.6
109	281.5	334.5	446.0	558.3	670.1	893.9	1118.1	1338.1	1563.9	1790.2	2235.0	2680.5	3130.0	3574.8
110	284.0	337.6	450.1	563.4	676.2	902.0	1128.3	1350.3	1577.9	1806.5	2255.0	2704.6	3158.3	3607.3
111	286.5	340.6	454.2	568.5	682.3	910.1	1138.5	1362.5	1592.1	1822.5	2275.4	2729.0	3186.7	3639.6
112	289.1	343.7	458.2	573.5	688.4	918.2	1148.4	1374.4	1606.3	1838.7	2295.4	2753.1	3214.9	3671.8
113	291.6	346.7	462.3	578.4	694.5	926.1	1158.5	1386.6	1620.3	1855.0	2315.7	2777.3	3243.1	3704.1
114	294.2	349.8	466.4	583.5	700.6	934.2	1168.7	1398.8	1634.5	1871.0	2335.8	2801.6	3271.5	3736.6
115	296.7	352.8	470.4	588.5	706.7	942.4	1178.8	1410.8	1648.7	1887.2	2356.1	2825.8	3299.7	3768.9
116	299.2	355.9	474.2	593.6	712.5	950.5	1188.7	1422.9	1662.9	1903.5	2376.2	2850.1	3327.9	3801.1
117	301.8	358.9	478.3	598.7	718.6	958.6	1198.9	1435.1	1676.9	1919.5	2396.5	2874.3	3356.4	3833.4
118	304.3	362.0	482.4	603.8	724.7	966.5	1209.1	1447.3	1691.2	1935.7	2416.8	2898.7	3384.6	3865.6
119	306.9	365.0	486.4	608.9	730.8	974.6	1219.2	1459.3	1705.1	1951.7	2436.9	2922.8	3412.8	3898.2
120	309.4	367.8	490.5	613.9	736.9	982.8	1229.4	1471.4	1719.4	1968.0	2457.2	2946.9	3441.2	3930.4
121	311.9	370.9	494.6	618.8	743.0	990.9	1239.3	1483.6	1733.6	1984.3	2477.3	2971.3	3469.4	3962.7
122	314.5	373.9	498.6	623.8	749.1	999.0	1249.5	1495.6	1747.6	2000.3	2497.6	2995.4	3497.6	3995.0
123	317.0	377.0	502.7	628.9	754.9	1006.9	1259.6	1507.8	1761.8	2016.5	2517.7	3019.8	3526.0	4027.4
124	319.6	380.0	506.7	634.0	761.0	1015.0	1269.8	1520.0	1776.0	2032.5	2538.0	3044.0	3554.2	4059.7
125	322.4	383.3	510.8	639.1	767.1	1023.1	1279.7	1532.2	1790.0	2048.8	2558.0	3068.3	3582.4	4092.0
126	324.9	386.1	514.6	644.2	773.2	1031.3	1289.8	1544.1	1804.2	2065.0	2578.4	3092.5	3610.9	4124.2
127	327.4	389.1	518.7	649.2	779.3	1039.4	1300.0	1556.3	1818.4	2081.0	2598.4	3116.6	3639.1	4156.7
128	330.0	392.2	522.7	654.3	785.4	1047.3	1310.2	1568.5	1832.4	2097.3	2618.8	3141.0	3667.3	4189.0
129	332.5	395.2	526.8	659.4	791.5	1055.4	1320.1	1580.4	1846.6	2113.5	2638.8	3165.1	3695.7	4221.2
130	335.1	398.3	530.9	664.2	797.3	1063.5	1330.2	1592.6	1860.8	2129.5	2659.2	3189.5	3723.9	4253.5
131	337.6	401.3	534.9	669.3	803.4	1071.7	1340.4	1604.8	1874.8	2145.8	2679.2	3213.6	3752.1	4286.0
132	340.1	404.4	539.0	674.4	809.5	1079.8	1350.5	1617.0	1889.0	2161.8	2699.5	3238.0	3780.6	4318.3
133	342.7	407.4	543.1	679.5	815.6	1087.7	1360.4	1628.9	1903.2	2178.1	2719.6	3262.1	3808.8	4350.5
134	345.2	410.2	547.1	684.6	821.7	1095.8	1370.6	1641.1	1917.2	2194.3	2739.9	3286.9	3836.9	4382.8
135	347.8	413.3	551.2	689.6	827.8	1103.9	1380.8	1653.3	1931.4	2210.3	2760.0	3310.7	3865.4	4415.3
136	350.3	416.3	555.3	694.7	833.9	1112.0	1390.9	1665.3	1945.7	2226.6	2780.3	3334.8	3893.6	4447.6
137	352.8	419.4	559.1	699.8	839.7	1120.2	1400.8	1677.5	1959.6	2242.8	2800.4	3359.2	3921.8	4479.8
138	355.4	422.4	563.1	704.6	845.8	1128.3	1411.0	1689.6	1973.9	2258.8	2820.7	3383.3	3950.2	4512.1
139	357.9	425.5	567.2	709.7	851.9	1136.2	1421.2	1701.8	1988.1	2275.1	2841.0	3407.7	3978.4	4544.6
140	360.5	428.5	571.3	714.8	858.0	1144.3	1431.3	1713.8	2002.1	2291.1	2861.1	3431.8	4006.6	4576.8
141	363.0	431.6	575.3	719.9	864.1	1152.4	1441.5	1726.0	2016.3	2307.4	2881.4	3456.2	4035.1	4609.1
142	365.5	434.6	579.4	724.9	870.2	1160.6	1451.4	1738.1	2030.5	2323.6	2901.5	3480.3	4063.3	4641.4
143	368.1	437.7	583.4	730.0	876.3	1168.7	1461.6	1750.1	2044.5	2339.6	2921.8	3504.4	4091.5	4673.9
144	370.6	440.7	587.5	735.1	882.2	1176.6	1471.7	1762.3	2058.9	2355.9	2941.9	3528.8	4119.9	4706.1
145	373.2	443.8	591.6	740.2	888.3	1184.7	1481.9	1774.5	2072.9	2372.1	2962.2	3553.0	4148.1	4738.4
146	375.7	446.8	595.6	745.3	894.4	1192.8	1491.8	1786.7	2086.9	2388.1	2982.2	3577.4	4176.3	4770.7
147	378.2	449.9	599.5	750.1	900.5	1200.9	1501.9	1798.6	2101.1	2404.4	3002.5	3601.5	4204.7	4803.2
148	380.8	452.7	603.5	755.2	906.6	1209.1	1512.1	1810.8	2115.3	2420.4	3022.6	3625.9	4232.9	4835.4
149	383.3	455.7	607.6	760.2	912.7	1217.2	1522.2	1823.0	2129.3	2436.6	3042.9	3650.0	4261.4	4867.7
150	385.9	458.8	611.6	765.3	918.8	1225.1	1532.1	1835.2	2143.5	2452.9	3063.0	3674.4	4289.6	4900.0

DOKUMA SANAYİNDE KULLANILAN ZİNCİRLER

HAFİF TİPİ GALLE DIN 8151 VE FABRİKA NORMU



Nr.	Hatve		İç Genişlik		Burç Kutru		Azami Genişlik		Plaka Adedi	Çalışma Sahası		Siklet		Kopma Mukavemeti	
	inç	mm	inç	mm	inç	mm	inç	mm		inç ²	mm ²	lb/ft.	Kg/mt	lb.	Kg.
GL 20	.787	20	.315	8	.157	4	.748	19	2	.014	9	.181	.27	550	250
GL 25	.984	25	.472	12	.197	5	1.024	26	2	.025	16	.242	.36	1100	500
GL 30	1.181	30	.512	13	.236	6	1.142	29	2	.031	20	.349	.52	2200	1000
GL 35	1.378	35	.591	15	.315	8	1.181	30	2	.037	24	.470	.70	2750	1250
GL 40	1.575	40	.709	18	.394	10	1.575	40	2	.074	48	.840	1.25	5500	2500
GL 45	1.772	45	.787	20	.433	11	1.850	47	2	.112	72	1.223	1.82	7150	3250
GL 50	1.969	50	.787	20	.433	11	2.244	57	2	.167	108	1.855	2.76	8800	4000
GL 55	2.165	55	.866	22	.472	12	1.969	50	2	.124	80	1.572	2.34	11000	5000
GL 60	2.362	60	.866	22	.472	12	2.362	60	2	.186	120	2.110	3.14	13200	6000
GL 65	2.559	65	.984	25	.551	14	2.323	59	2	.186	120	2.218	3.3	15400	7000
GL 70	2.756	70	.984	25	.551	14	2.559	65	2	.223	144	2.218	3.3	17600	8000
GL 80	3.150	80	1.181	30	.669	17	2.717	69	2	.260	168	3.024	4.5	22000	10000

TARAK ŞAPKA ZİNCİRLERİ

Nr.	a		b		c		d		Şapka Adedi	Siklet Kg/mt
	Hatve		Boğaz Genişliği		Delik Kutru		Plaka Kalınlığı			
	mm	inç	mm	inç	mm	inç	mm	inç		
D 100	36.5	1.38	10	0.394	9.5	0.375	2.5	0.0986	106'dan	0.92
D 101	38.1	1.5	13	0.512	9.5	0.375	2.5	0.0986	110'o	1
D 102	36.5	1.38	17	0.671	9.5	0.375	2.5	0.0986	106'dan	1.1
D 103	38.1	1.5	13	0.512	10	0.394	3	0.118	110'o	1.15

MAKARALI ZİNCİRLER

Nr.	a		b		c		d		Kopma Mukavemeti Kg.	Siklet Kg/mt
	Hatve		Boğaz Genişliği		Delik Kutru		Plaka Kalınlığı			
	mm	inç	mm	inç	mm	inç	mm	inç		
J 101	14	0.525	7	0.277	11	0.433	2	0.0791	800	0.7
J 102	15.87	0.62	9	0.355	11	0.433	2	0.0791	1000	1
J 103	16.25	0.63	9	0.355	11	0.433	2.5	0.0986	1250	1.1
J 104	16.34	0.635	9	0.355	11	0.433	2.5	0.0986	1250	1.1
J 105	20	0.78	9	0.355	15	0.7	2.5	0.0986	1500	2

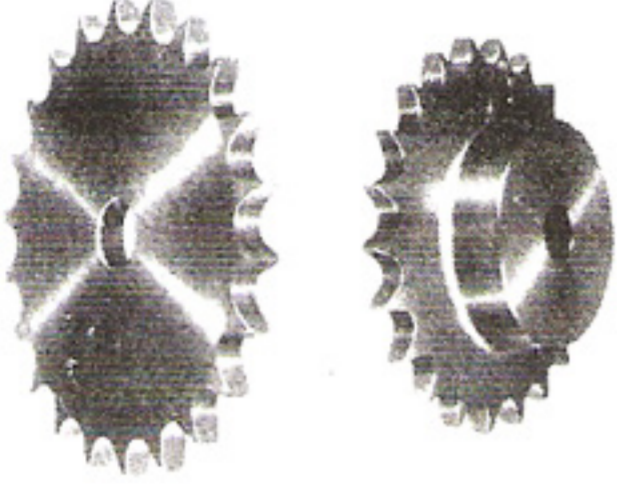


MEKANİK ZİNCİR

WIPPERMANN

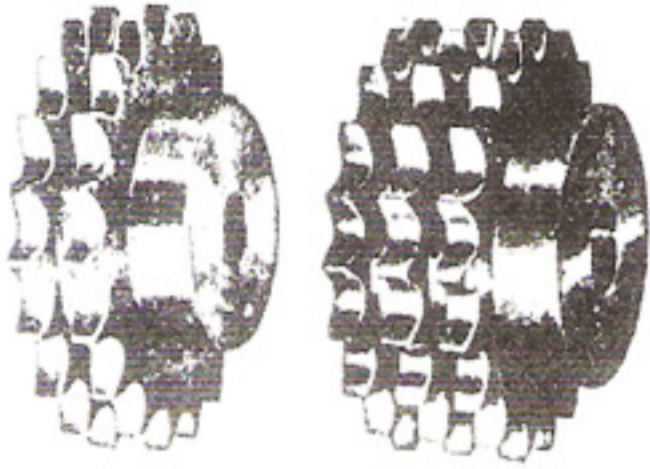


DİŐLİ - DİŐLİ KAPLINLERİ - V KASNAKLARI KONİK SIKMA BURÇLARI

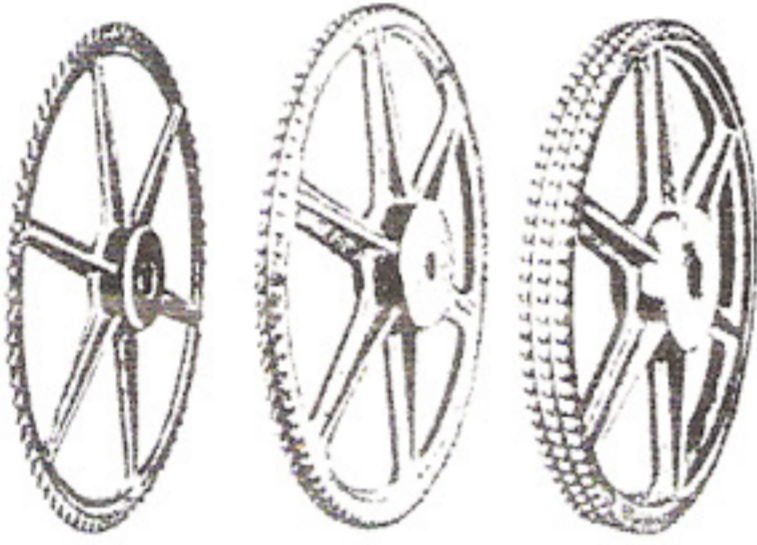


6 MM. den 3 parmak hatveli
zincirler için diŐli imalatı

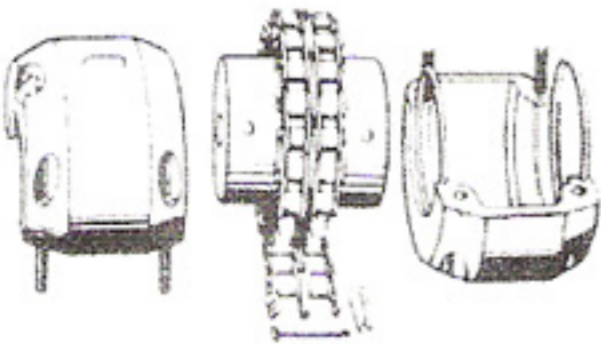
Flanjlı - GÖBEKLI
Tek sıralı
Çelik



İki sıralı
Üç sıralı
Çelik

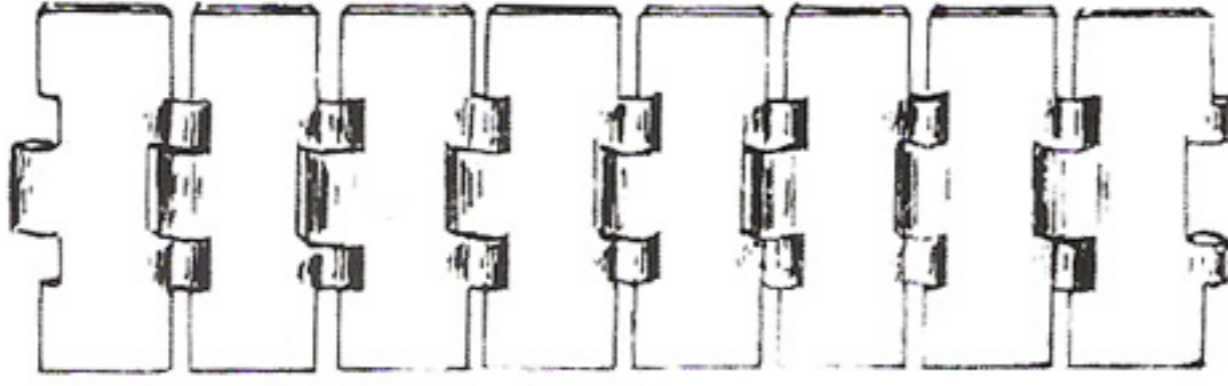


Tek sıralı
İki sıralı
Üç sıralı
Pik diŐlileri



Zincirli diŐli kaplinleri

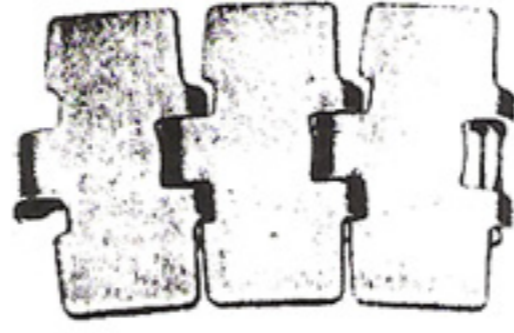
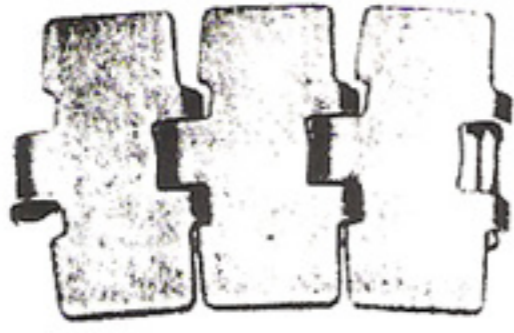
TAŞIMA ZİNCİRLERİ



Paslanmaz çelikten Şişe Yürütme Zincirleri

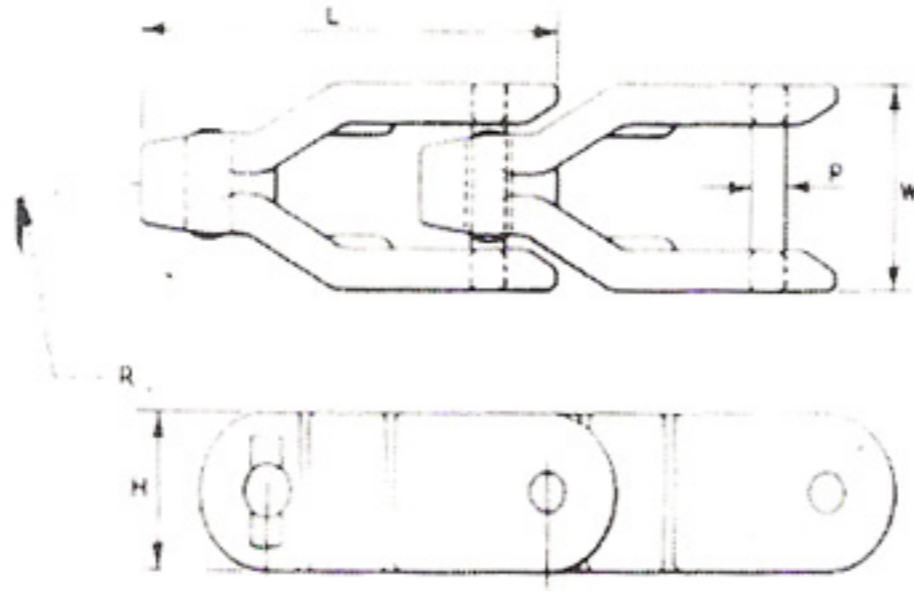
Hatve : 1.50"

Genişlikleri : 82.50-101.60-114.30 mm
152.40-190.50 mm

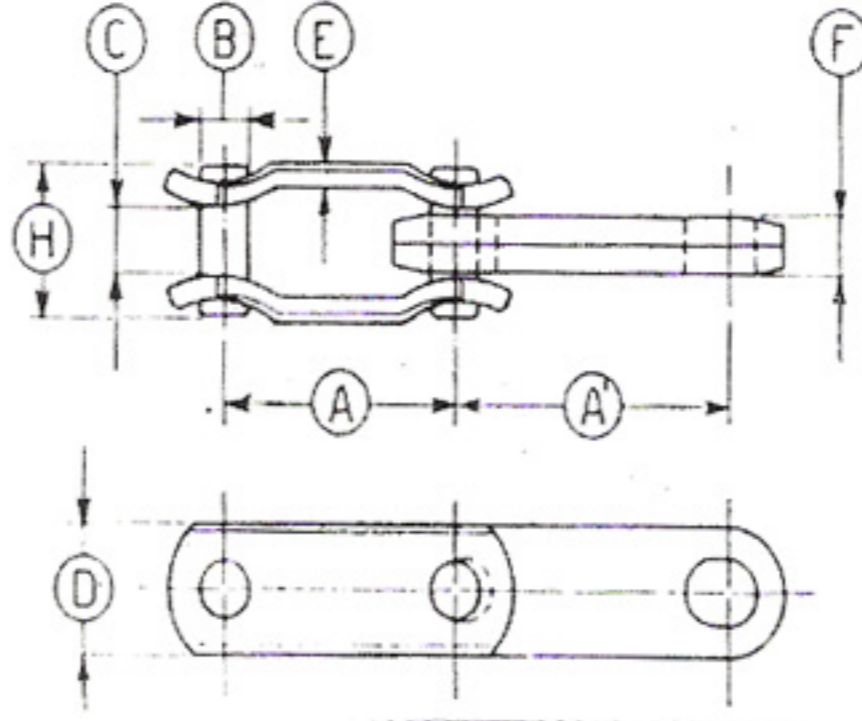


Paslanmaz çelikten Dönüslü Şişe Kutu Yürütme Zincirleri

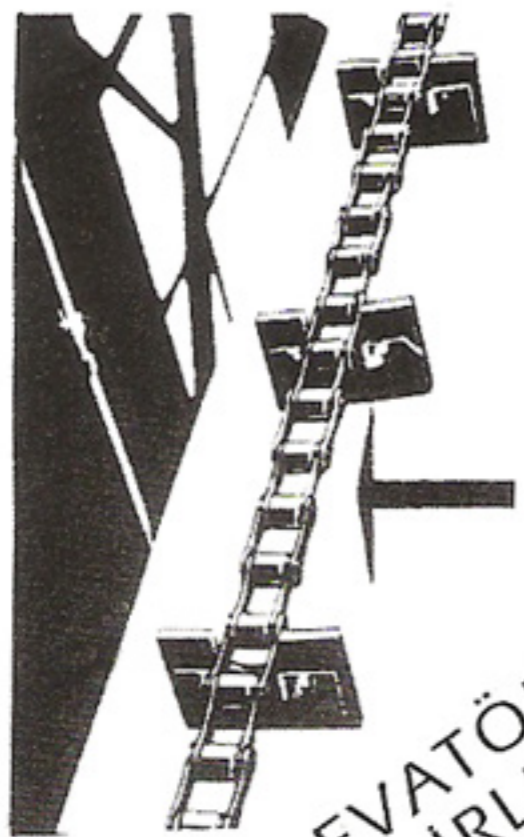
Hatve : 38.10 mm



63.50 mm

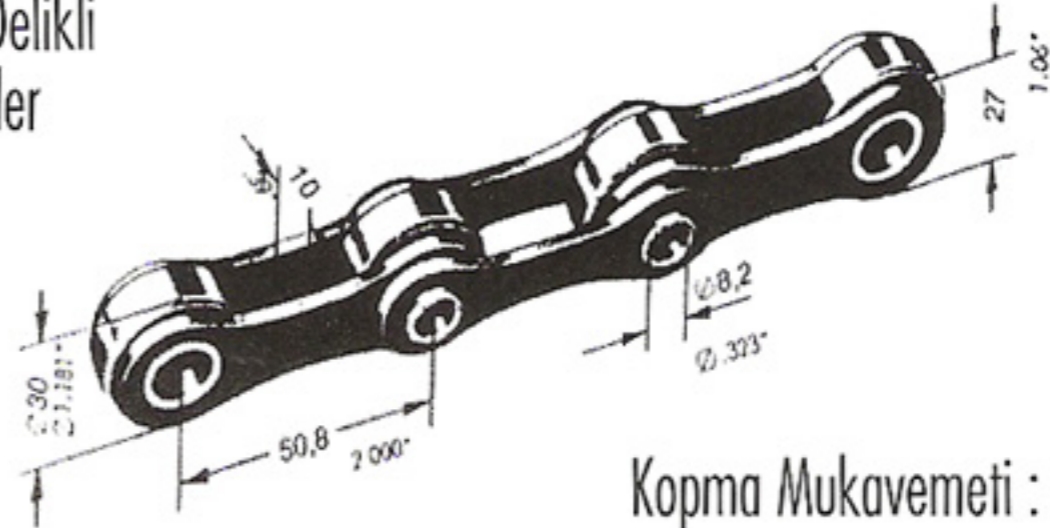


Dönüslü Kasa Yürütme Zincirleri



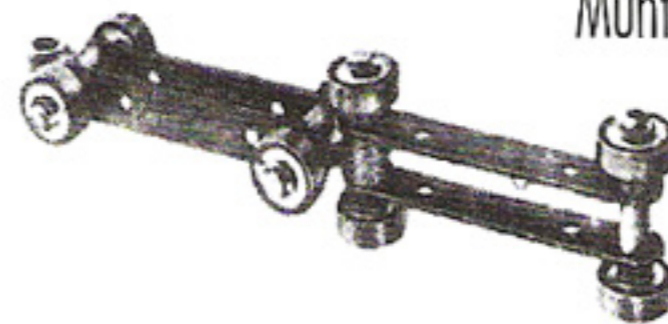
ELEVATÖR ZİNCİRLERİ

Pimleri Delikli Zincirler



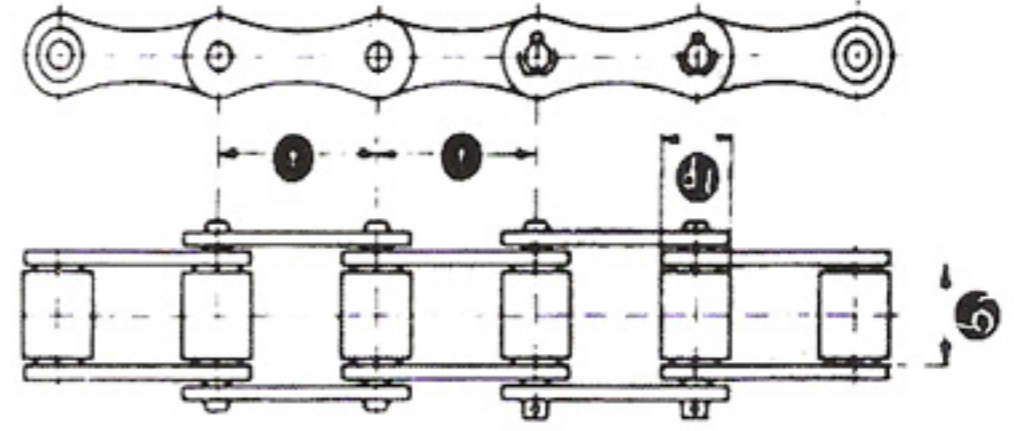
Kopma Mukavemeti : 5.000 kg.

Muhtelif Yönlere Dönüslü Zincir



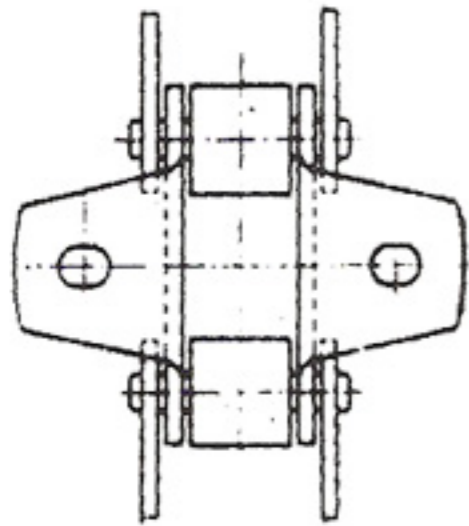
ZİRAİ TRANSMİSYON ZİNCİRLERİ

- BİÇER DÖVER
- BİÇER BAĞLAR
- TOHUM EKME - MİBZER
- ORAK MAKİNALARI
- V.S ...

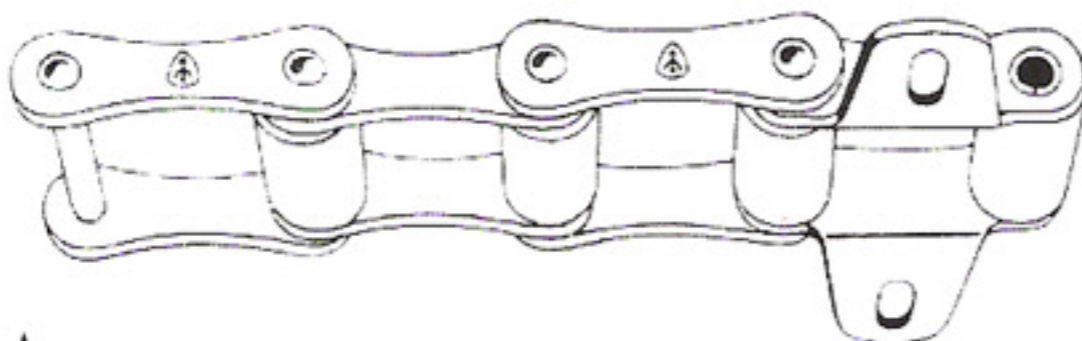


Nr.	Norm Nr.	Hatve		Makara Genişlik		Makara Kutru		Siklet		Kopma Mukavemeti	
		inç	mm	inç	mm	inç	mm	lb/ft.	Kg/mt	lb.	Kg.
AR 32 S	32	1.15	29.21	.625	15.9	.45	11.43	.55	.76	1810	820
AR 42 S	42	1.375	34.93	.75	19.1	.562	14.27	1.19	1.65	6000	2720
AR 38	-	1.5	38.1	.75	19.1	.48	12.1	.95	1.30	6600	3000
AR 52 S	52	1.5	38.1	.875	22.2	.6	15.24	1.12	1.55	4000	1810
AR 45 S	45	1.63	41.4	.875	22.2	.6	15.24	1.07	1.43	4000	1810
AR 55 S	55	1.63	41.4	.875	22.2	.7	17.78	1.21	1.67	4000	1810
AR 41	-	1.633	41.5	.815	20.7	.625	15.9	1.89	2.60	15400	7000
AR 62 S	62	1.65	41.91	1.0	25.4	.75	19.05	1.45	2.00	6000	2720
AR 77 S	77	2.297	58.34	.875	22.2	.719	18.26	2.00	2.76	10000	4540
AR 88 S	88	2.609	66.27	1.125	28.6	.9	22.86	2.24	3.10	10000	4540

PRESE ÇELİKTE ZİNCİR BAKLALARI



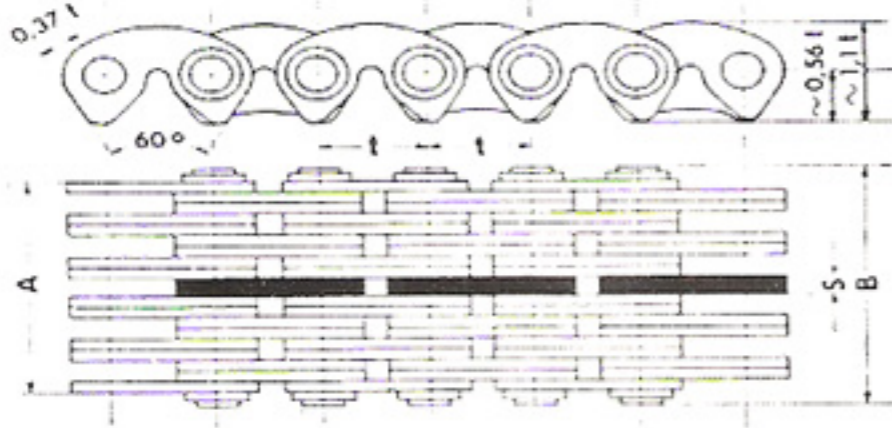
**KONVEYÖR
KULAKLI
ZİNCİRLER**



Nr.	Hatve mm	Bir metrede bakla adedi	Kopma Mukave. kg.
25	23.0	44	430
32	29.5	34	750
42	35.0	29	1050
45	41.3	24	950
51	28.8	35	750
52	38.5	26	1220
55	41.3	24	1260
62-72.5	42.0	24	2000

SESSİZ ZİNCİRLER

60° İÇ KLAVUZU



Nr.	† Hatve		Plaka Kombinezon	A	B	S	F cm ²	Kopma Mukavemeti Kg.	Siklet Kg/mt
	mm	inç							
2101	8		1x2	8.2	12.8	1.2	0.08	500	0.40
2102			2x2	10.6	15.1		0.11	660	0.49
2103			2x3	12.9	17.5		0.14	835	0.59
2104			4x4	20	24.5		0.22	1300	0.87
2105			4x5	22.2	26.7		0.25	1500	0.97
2106			6x6	29.2	33.6		0.34	2000	1.10
2107			6x7	31.6	36.1		0.36	2200	1.25
2108			8x8	38.6	43		0.45	2700	1.31
2109			8x9	40.9	45.5		0.48	3000	1.38
2110	10		1x2	11.2	15.7	1.6	0.15	800	0.60
2111			2x2	14.4	19		0.19	1050	0.77
2112			2x3	17.8	22.3		0.24	1300	0.93
2113			4x4	27.1	31.7		0.39	2100	1.40
2114			4x5	30.5	35.3		0.44	2400	1.56
2115			6x6	39.8	44.5		0.59	3100	2.08
2116			6x7	43	48		0.64	3400	2.20
2117			8x8	52.7	57.3		0.78	4200	2.65
2118			8x9	55.7	60.9		0.83	4500	2.80
2121	12.7		1x2	11.2	16.1	1.6	0.20	900	0.80
2122			2x2	14.4	19.5		0.27	1200	1.00
2123			2x3	17.8	22.9		0.34	1500	1.20
2124			4x4	27.1	32.6		0.54	2400	1.80
2125			4x5	30.3	35.2		0.61	2800	2.00
2126			6x6	39.8	44.9		0.81	3600	2.60
2127			6x7	43	48.4		0.87	3900	2.80
2128			8x8	52.7	58.1		1.08	4800	3.40
2129			8x9	55.7	61.2		1.14	5100	3.60
2130			10x10	65.4	70.6		1.35	6000	4.20
2141	15.875	5/8	1x2	16.7	22.2	2.3	0.33	2000	1.50
2142			2x2	21.4	27		0.44	2600	1.50
2143			2x3	26.2	32.2		0.56	3400	2.25
2143/4			3x3	31	37		0.69	4100	2.70
2144			4x4	40.4	46.3		0.89	5400	3.35
2145			4x5	45.2	51.4		1.00	6000	3.70
2145/6			5x5	48.3	54		1.12	6500	4.10
2146			6x6	59.4	65.7		1.34	8500	4.80
2147			6x7	64.2	70.5		1.45	8800	5.20
2148			8x8	78.4	85		1.78	10600	6.65
2149			8x9	83.2	90		1.90	11400	6.75
2150	10x10	97.4	104	2.23	13100	8.10			
2151	10x11	102.2	109	2.34	13800	8.10			
2161	19.05	3/4	1x2	21.3	27.2	3	0.50	2600	2.15
2162			2x2	26.7	33.1		0.67	3500	2.70
2163			2x3	32.7	39		0.84	4400	3.30
2163/4			3x3	38	44		1.01	5500	4.00
2164			4x4	50.4	56.8		1.35	7200	5.00
2165			4x5	56.4	63		1.52	8100	5.60
2165/6			5x6	67	74		1.69	9600	6.65
2166			6x6	74	80.5		2.02	10800	7.30
2167			6x7	80	86.4		2.19	11600	7.80
2168			8x8	97.7	104.1		2.70	14500	9.50
2169			8x9	103.7	110.1		2.87	15200	10.10
2170	10x10	121.4	127.8	3.37	18000	11.80			
2171	10x11	127.4	133.7	3.54	19000	12.40			
2181	25.4	1	1x2	27.5	34.8	4	0.94	4300	3.20
2182			2x2	35.3	42.6		1.26	5700	4.00
2183			2x3	43.1	51.5		1.58	7200	4.90
2183/4			3x3	51	58		1.90	8500	5.60
2184			4x4	66.5	74		2.52	11500	7.50
2185			4x5	74.4	82		2.84	12800	8.30
2185/6			5x6	90	97		3.17	15500	10.00
2186			6x6	97.8	105.2		3.79	17200	11.00
2187			6x7	105.7	113		4.10	18500	11.70
2186/7			7x8	121	129		4.55	21500	13.30
2188			8x8	129.1	136.5		5.05	23000	14.20
2189			8x9	137	144.5		5.37	24500	15.00
2190	10x10	160.4	168	6.31	28500	17.60			
2191	10x11	168.3	175.5	6.63	30000	18.50			
2192	12x12	191.7	199	7.58	34000	21.00			

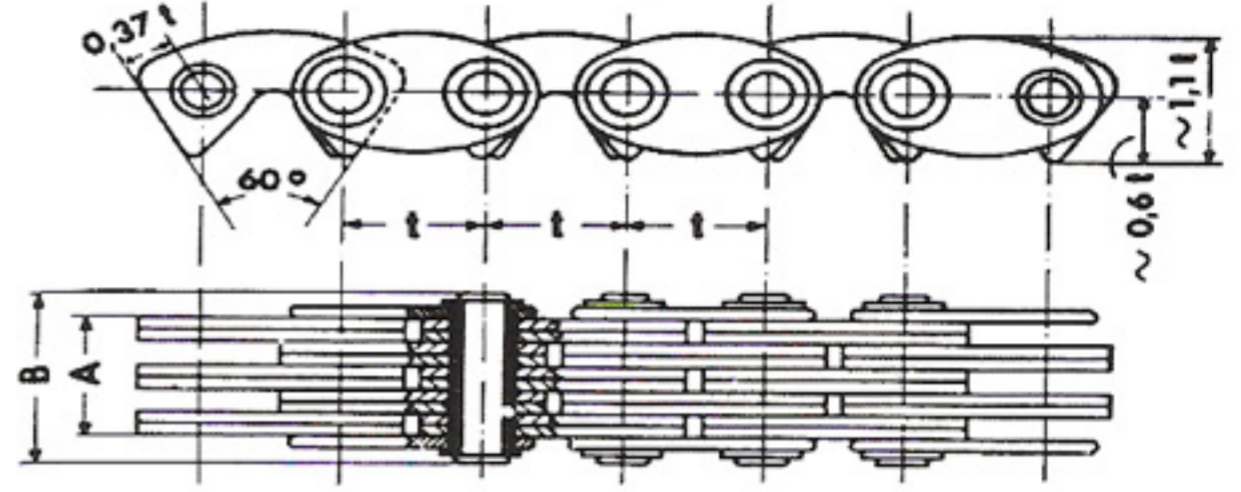
MEKANİK ZİNCİR



SESSİZ ZİNCİRLER

60° DIŞ
KLAUZUZU

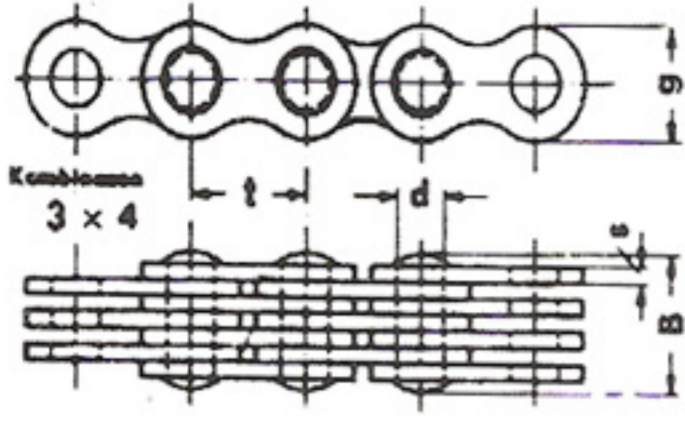
Nr.	t		Plaka Kombinezon	A	B	F cm ²	Kopma Mukavemet Kg.	Siklet Kg/mt
	Hatve mm	inç						
1101	8		1x2	7	13.6	1.11	750	0.42
1102			2x2	9.3	15.8	0.14	950	0.50
1103			2x3	11.8	18.2	0.17	1150	0.60
1104			3x4	16.4	22.9	0.23	1500	0.78
1105			4x5	21	27.5	0.28	1900	0.99
1106			5x6	25.6	32.3	0.34	2300	1.17
1107			6x7	30.4	37	0.40	2300	1.17
1108			7x8	35	41	0.45	3000	1.52
1131	9.525	3/8	2x3	16	23.4	0.29	1400	0.94
1132			3x3	19.3	26.7	0.34	1600	1.06
1133			3x4	22.4	30.1	0.39	1900	1.19
1134			4x4	25.6	33.3	0.44	2100	1.31
1135			4x5	28.7	36.2	0.49	2400	1.45
1136			5x5	32	40	0.54	2600	1.58
1110			1x2	9.6	17.3	0.20	1100	0.64
1111			2x2	12.7	20.3	0.24	1400	0.79
1112			2x3	16	23.4	0.29	1700	0.93
1113			3x4	22.4	30.1	0.39	2250	1.26
1114			4x5	28.7	36.2	0.49	2800	1.56
1115			5x6	35	42.8	0.59	3400	1.88
1116			6x7	41.2	49	0.69	4000	2.19
1117			7x8	47.6	55.6	0.79	4500	2.19
1118			8x9	54	62	0.88	5000	2.81
1121	12.7	1/2	1x2	9.6	17.8	0.27	1250	0.86
1122			2x2	12.7	21	0.34	1550	1.07
1123			2x3	16	24.3	0.40	1900	1.28
1124			3x4	22.4	30.7	0.54	2500	1.67
1125			4x5	28.7	36.9	0.67	3200	2.06
1126			5x6	35	43.4	0.81	3800	2.46
1127			6x7	41.2	49.6	0.94	4400	2.86
1128			7x8	47.6	56.2	1.08	5000	3.25
1129			8x9	54	62.5	1.21	5600	3.64
1130			10x10	63.9	72.1	1.35	7500	4.11
1141	15.875	5/8	1x2	14.3	25.3	0.45	2600	1.61
1142			2x2	18.8	30	0.56	3100	2.06
1143			2x3	23.6	34.7	0.67	4000	2.35
1144			3x4	32.9	44	0.89	5300	3.08
1145			4x5	42.3	53.5	1.12	6500	3.83
1146			5x6	52	62.9	1.34	7800	4.56
1147			6x7	61.7	72.6	1.56	9000	5.29
1148			7x8	70.5	82	1.78	10500	6.00
1149			8x9	79.9	91.3	2.01	11600	6.73
1150	9x10	89.3	100.7	2.23	13000	7.45		
1161	19.05	3/4	1x2	17.7	30.3	0.67	3300	2.41
1162			2x2	23.5	36.1	0.84	4000	2.98
1163			2x3	29.5	42.2	1.01	5000	3.55
1164			3x4	41.9	54.4	1.35	6600	4.68
1165			4x5	53.1	65.8	1.69	8200	5.81
1166			5x6	64.8	77.5	2.02	9800	6.96
1167			6x7	76.6	89.9	2.36	11500	8.09
1168			7x8	88.2	101.2	2.70	13200	9.22
1169			8x9	100	113.3	3.04	15000	10.36
1170			9x10	111.5	125	3.37	16500	11.49
1171			10x11	123.2	137.2	3.71	18000	12.62
1181	25.4	1	1x2	23.5	38.3	1.26	5400	3.80
1182			2x2	31.1	46	1.58	6400	4.65
1183			2x3	38.9	54.1	1.89	8000	5.50
1184			3x4	54.6	70	2.52	11000	7.20
1185			4x5	70	85	3.16	13500	8.90
1186			5x6	85.5	101.3	3.79	16000	10.60
1187			6x7	101.1	116.2	4.42	19000	12.30
1188			7x8	116.6	132	5.05	22000	13.90
1189			8x9	132.2	147.6	5.68	24000	15.70
1190			9x10	147.7	163.4	6.32	27000	17.40
1191			10x11	163.3	179.1	6.95	30000	19.10
1192			11x12	178.9	195	7.58	32000	20.83



MEKANİK ZİNCİR

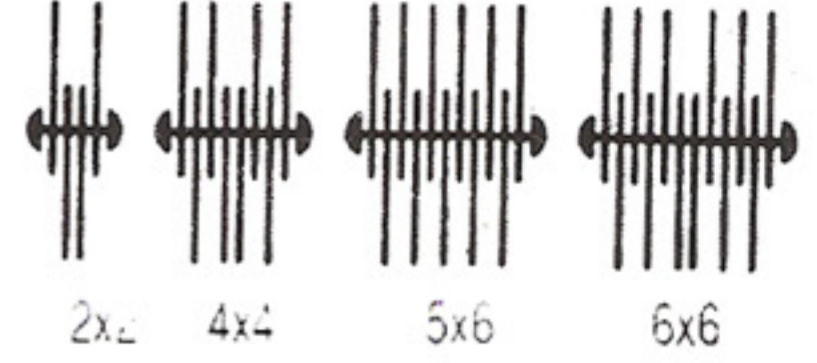


FLEYER KALDIRMA ZİNCİRLERİ



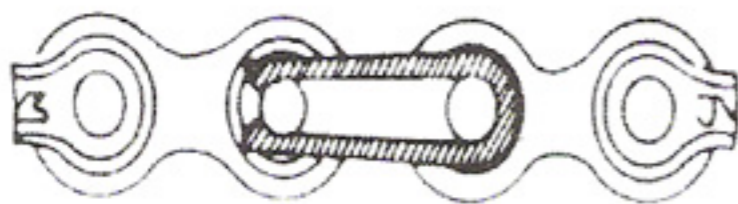
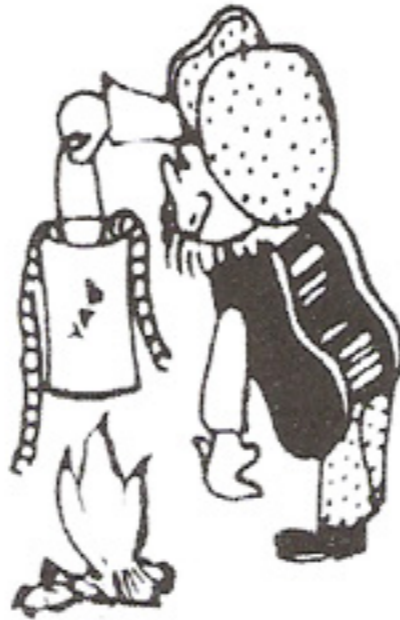
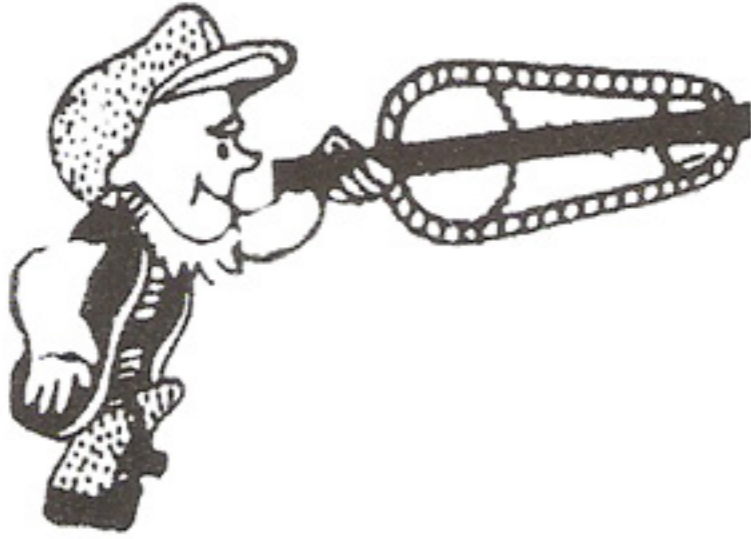
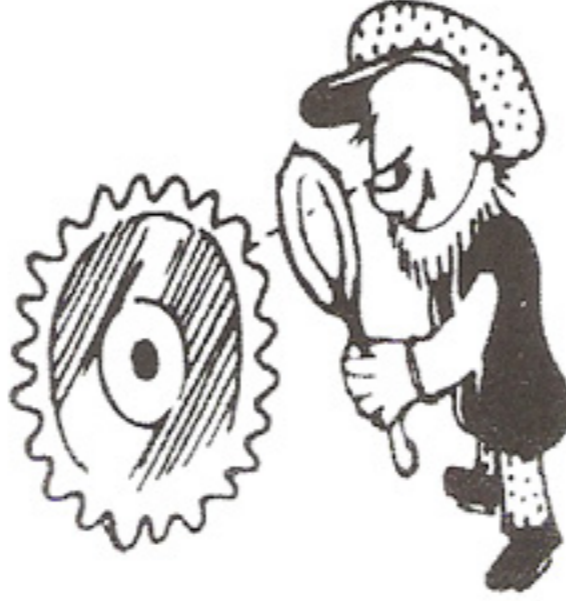
TAKVİYELİ

KOMBİNEZON ÖRNEKLERİ



t	Krom- binezon	d	B	s	g	F	PB	a	t	Krom- binezon	d	B	s	g	F	PB	a
Hatve mm	inç	Pim	Genişlik	Plaka Kalınlığı	Plaka Yüksek.	Çalışma Sahası	Kopma Mukav.	Siklet	Hatve mm	inç	Pim	Genişlik	Plaka Kalınlığı	Plaka Yüksek.	Çalışma Sahası	Kopma Mukav.	Siklet
6	1x2	1.85	3.4	0.60	5.5	0.011	300	0.06	19.05	3/4"	5.72	10.3	1.80	15	0.206	3000	0.59
	2x2		4.0			0.022	400	0.08							15.7	0.310	4500
8	3x4	2.55	5.8	1.00	7.2	0.033	700	0.13	25.4	1"	8.27	17.0	3	20	0.412	6000	1.15
	4x4		6.4			0.076	1400	0.28							27.0	0.75	8500
10	5x6	3.00	8.2	1.50	9.0	0.044	800	0.15	31.75	1 1/4"	10.17	29.5	5	34	0.515	8000	1.55
	6x6		8.8			0.102	1600	0.32							36.0	1.54	21000
12.7	7x8	4.45	10.2	1.65	11	0.127	2200	0.44	38.1	1 1/2"	14.63	42.0	6	40	0.824	12000	2.24
	8x8		11.8			0.294	3600	0.79							47.0	2.87	35400
15.875	9x10	5.08	13.3	1.70	13	0.153	2400	0.48	44.45	1 3/4"	15.87	53.0	6	43	0.927	14000	2.67
	10x10		14.4			0.367	4750	1.08							59.0	3.81	41000
15.875	11x12	5.08	15.5	1.70	13	0.225	2750	0.83	44.45	1 3/4"	15.87	63.0	6	43	1.030	15000	2.78
	12x12		17.5			0.440	5700	1.18							77.0	4.76	53400
15.875	13x14	5.08	18.6	1.70	13	0.270	3000	0.91	44.45	1 3/4"	15.87	84.0	6	43	1.25	18300	4.15
	14x14		18.6			0.514	6700	1.46							102.0	6.66	72600
15.875	15x16	5.08	20.4	1.70	13	0.315	3750	1.14	44.45	1 3/4"	15.87	108.0	6	43	1.50	21000	4.53
	16x16		20.4			0.587	7600	1.56							108.0	7.62	80000
15.875	17x18	5.08	25.0	1.70	13	0.360	4000	1.23	44.45	1 3/4"	15.87	108.0	6	43	1.75	23500	5.63
	18x18		25.0			0.735	9400	1.94							108.0	8.55	105000
15.875	19x20	5.08	26.6	1.70	13	0.405	5000	1.50	44.45	1 3/4"	15.87	108.0	6	43	2.00	27500	5.99
	20x20		26.6			0.965	12700	2.30							108.0	8.55	105000

ZİNCİRLERİN BAKIMI



Zaman zaman zinciri benzin ve gaza batırıp bir kaç saat bırakınız.

Zinciri sağa, sola hareket ettirip temizleyiniz.

Sert bir fırça ile fırçalayınız. Kirleri tamamen yok etmek için tekrar Benzin veya Gazla yıkayınız. Yıkandıktan sonra, ılık bir yağ hazırlayarak, Bilhassa yağın makaraların içine nüfuz etmesine dikkat ediniz.

Yağ damlalarının iyice akmasını bekleyiniz.

Dişlileri de temizledikten sonra, kontrol ediniz.

Dişlilerin, karşılıklarının aynı hizada olmasını mutlaka temin ediniz.

Zincir kilidini ve yayı resimde görüldüğü şekilde takınız.

YAĞLAMA METODLARI

Zincirlerin yağlanması 4 şekilde olur.

- 1) Alçak devirli için ELLE
- 2) Orta devirli için DAMLALIKLA
- 3) Hızlı devirli için YAĞ BANYOSUNDA
- 4) Yüksek devirli için TAZYİKLE YAĞLAMA

MEKANİK ZİNCİR

Tersane Cad. Kardeşim Sok.

Kurşunlu Han No: 26/24

80000 Karaköy / İSTANBUL

Tel&Fax: (0212) 243 61 83-244 20 99

Cep: (0532) 685 28 58

